

TCORX
FITNESS IN MOTION

INSTRUCTION



TRX SMART COMPACT



Rev : 00

Ed : 03/17



INTRODUCTION

The treadmill has been designed and constructed to provide trouble free usage and enjoyable exercise. You can greatly improve your understanding and benefits of exercising by carefully reading the instructions given in this manual. Please familiarize yourself with the maintenance advice provided for you.

SPECIFICATIONS

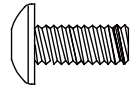
- Drive Motor: 1.2 HP
- Speed Range: 1.0 –12kmph
- Running Surface: 420 m/m x 1200 m/m
- Folding Design: Yes



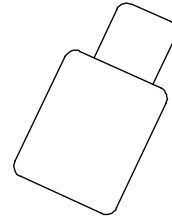
➤ **MAX.USER WEIGHT 100 KGS**

*ASSEMBLY
PACK
CHECK
LIST*

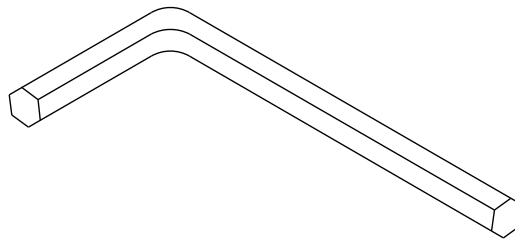
ASSEMBLY PACK CHECK LIST



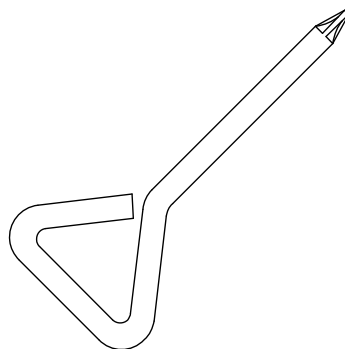
#99. M5 × P0.8 × 12L
Phillips Head Screw (2 pcs)



#111. Lubricant (1 pc)



#112. L Allen Wrench (1pc)

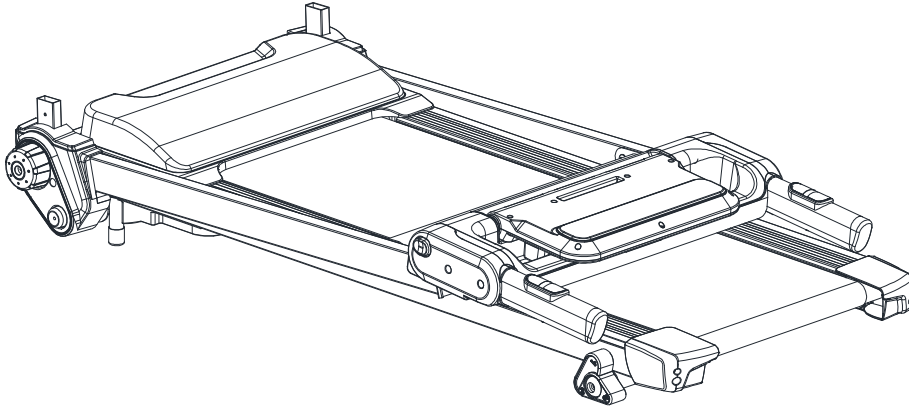


#115. Short Phillips Head Screw Driver (1pc)

ASSEMBLY

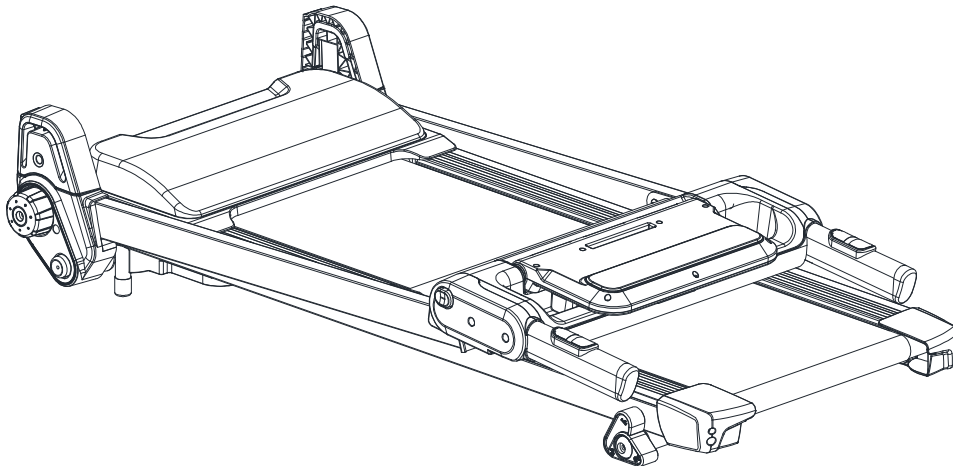
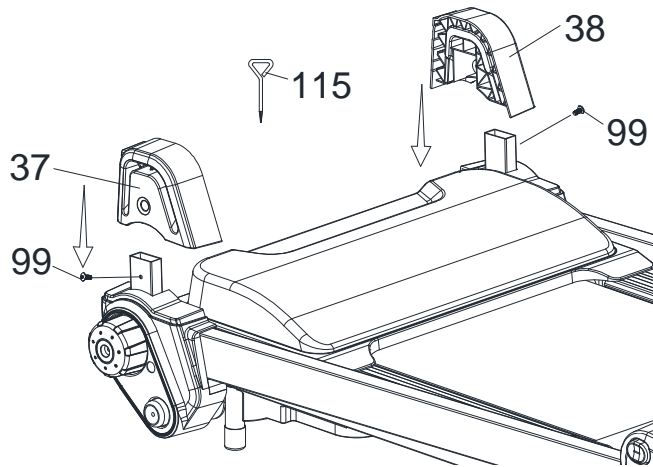
Step 1.

Place the treadmill on level ground.



Step2.

Install Front Frame Base Cover (L)(R) (37) and (38) on the treadmill and use Short Phillips Head Screw Driver (115) to tighten 2 pcs of M5 × P0.8 × 12L_Phillips Head Screw.



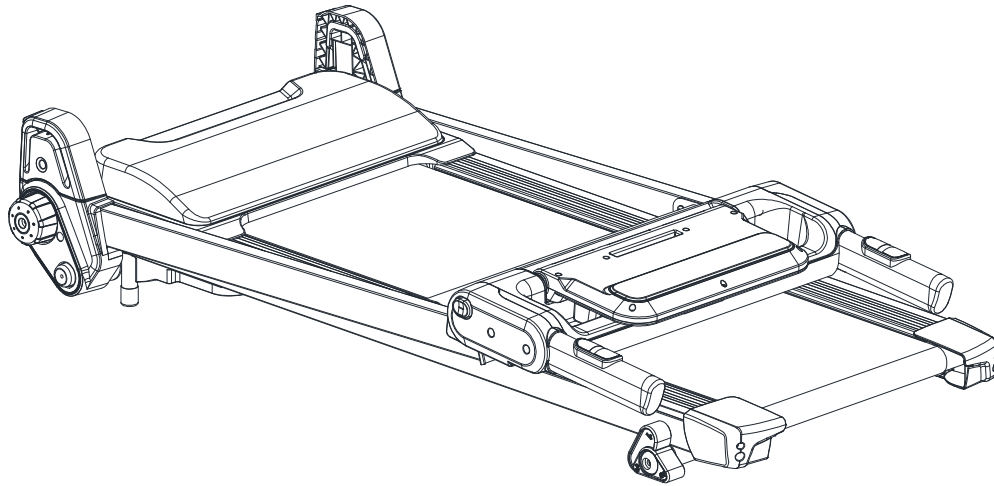
NOTE: Please Tighten All Screw After All Components Assembly Complete.

UNFOLDING FOLDING TRANSPORT

Unfolding Procedure

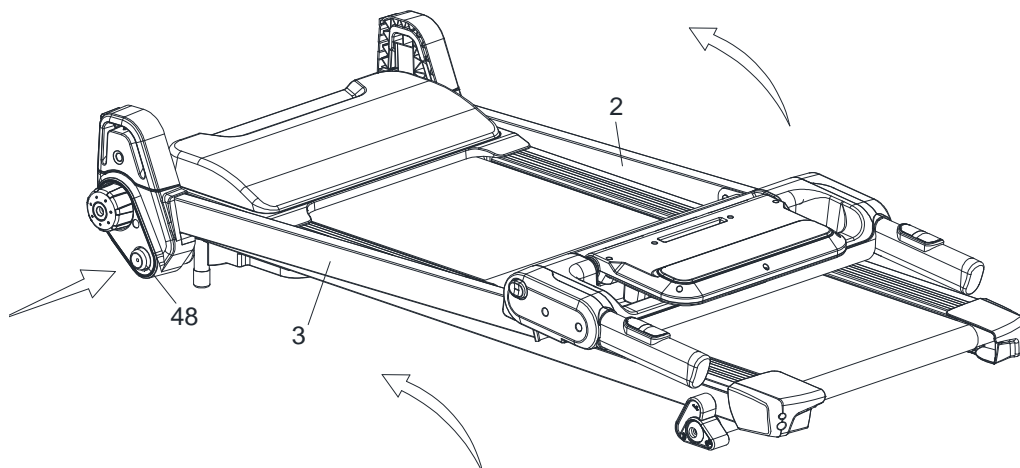
Step 1.

Place the treadmill on level ground.



Step 2.

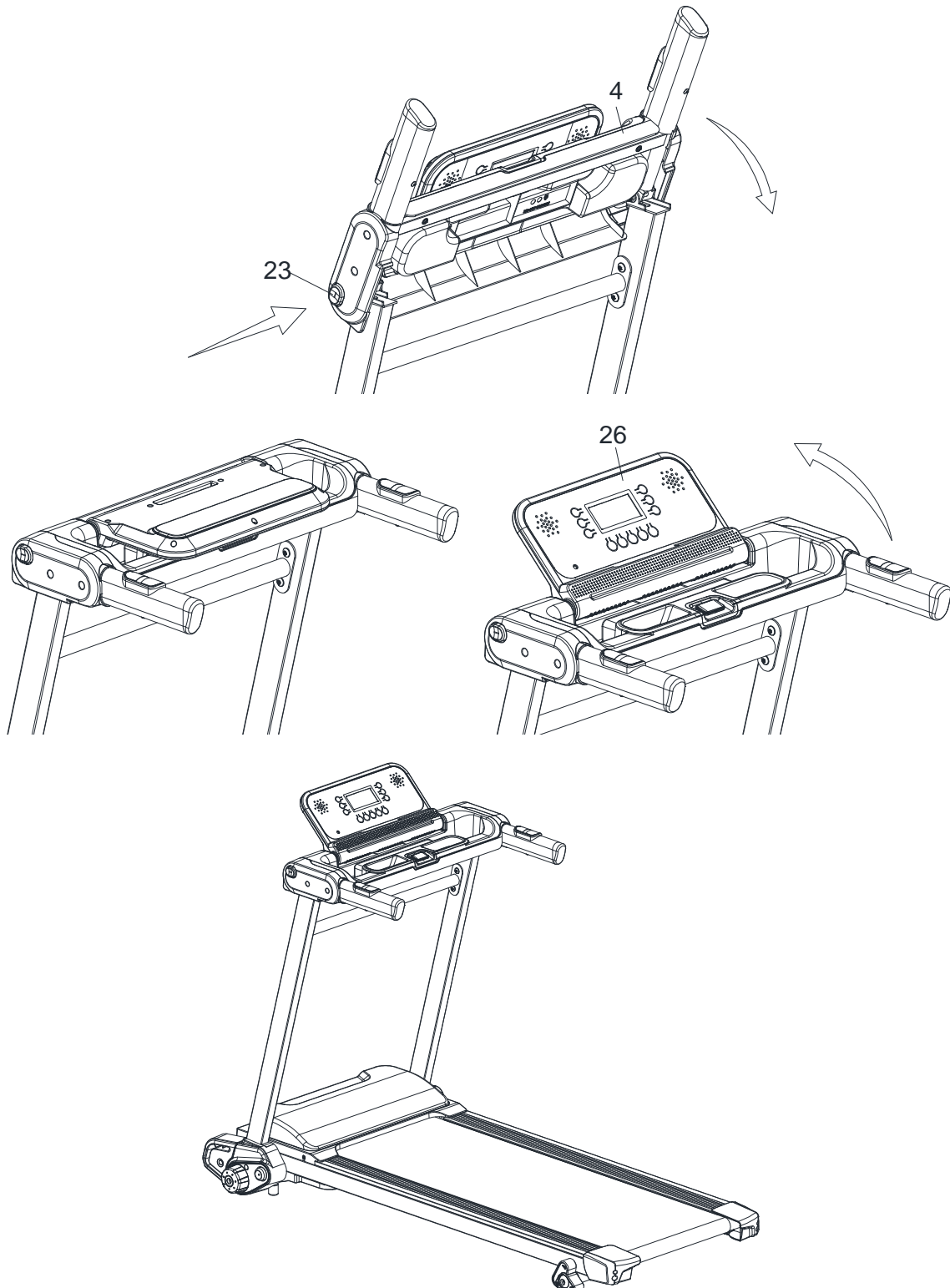
Press and hold the Release To Push A Button (Bottom)(48) and pull Uprights (L, R) (3,2) as the arrow indicates to the end position.



UNFOLDING FOLDING TRANSPORT

Step 3.

Press and hold Release To Push A Button (Top) (23) and turn Console Support (4) as indicated below and unfold console Assembly (26) into place.

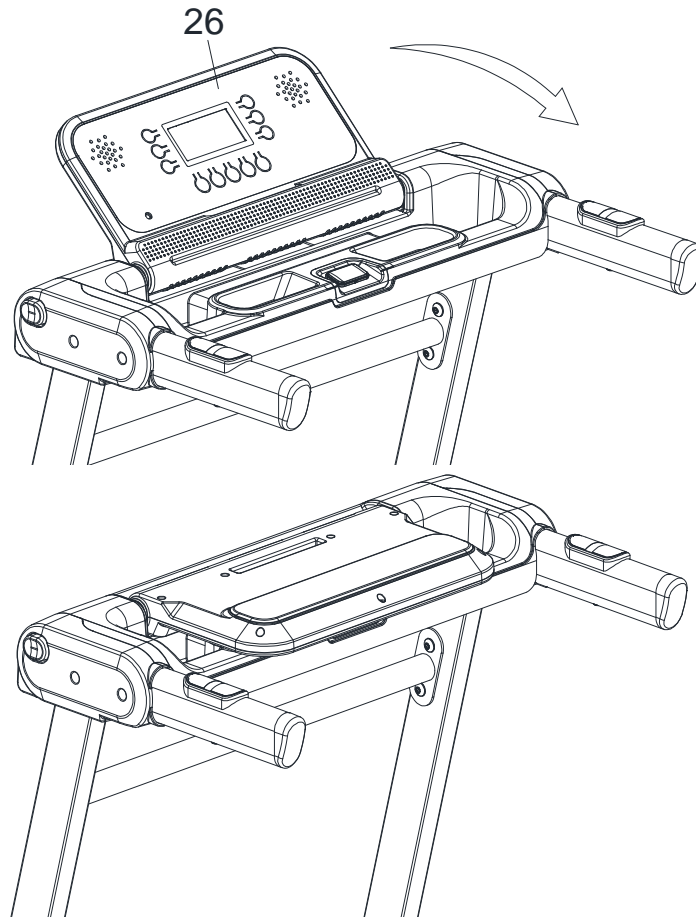


UNFOLDING FOLDING TRANSPORT

Folding Procedure

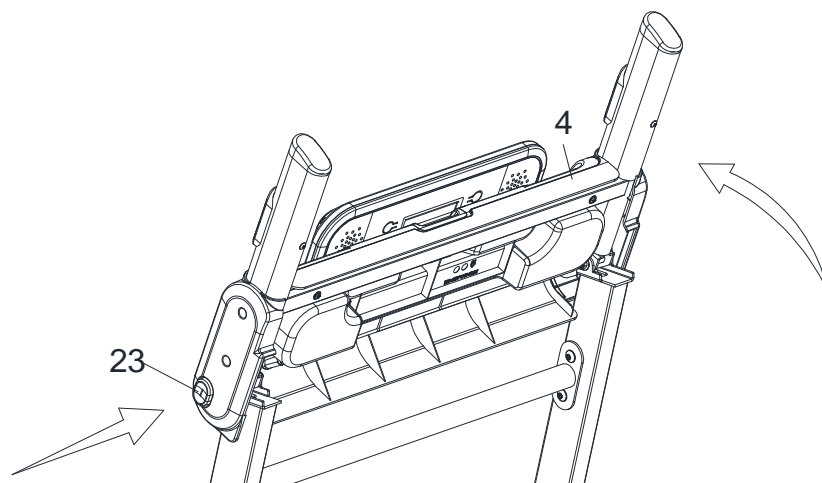
Step 1.

Fold Console Assembly (26).



Step 2.

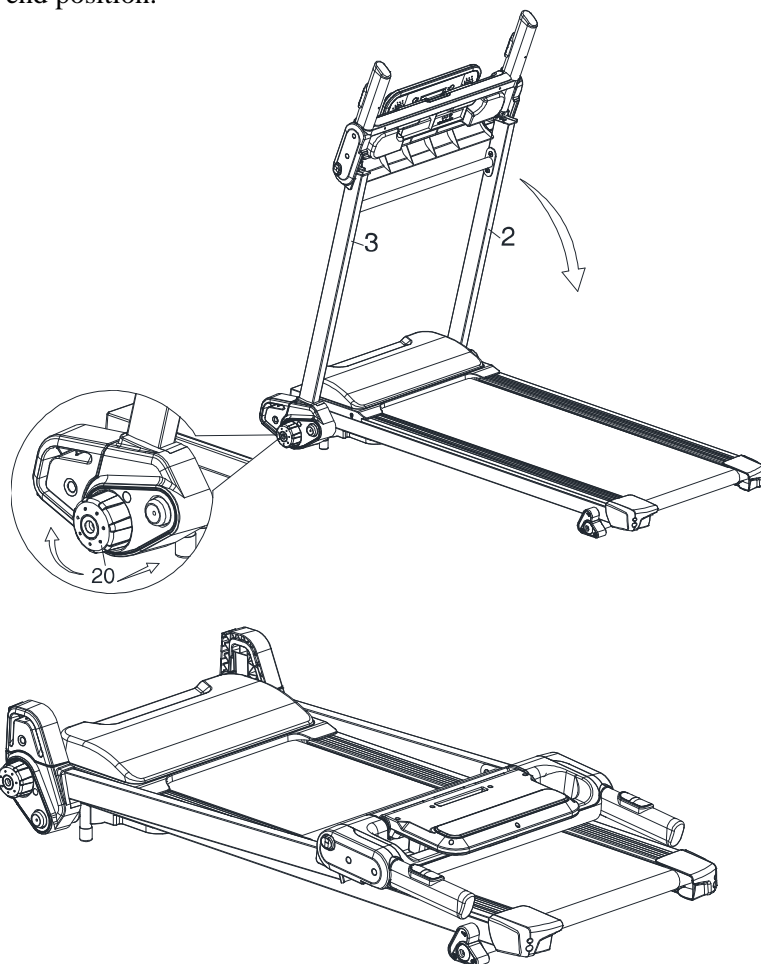
Press and hold the Release To Push A Button (Top) (23) and pull Console Support (4) up to the end.



UNFOLDING FOLDING TRANSPORT

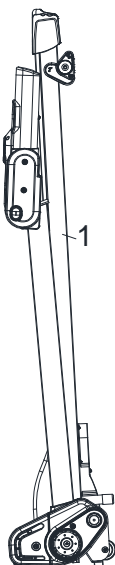
Step 3.

Press and turn Brake Tension Knob (20) clockwise and pull Uprights (L, R) (3,2) as the arrow indicates to the end position.



Step 4.

Pull up the Main Frame (1) to fold up the treadmill.



COMPUTER OPERATION INSTRUCTIONS



Button Function

A > “START/ STOP” Button

Press this button to start the operation of the treadmill with the starting speed at 1.0 KPH. Press it again to stop the treadmill with the speed gradually slow down until full stop.

B > “CLEAR/SET” Button

Pressing this button resets TIME, DISTANCE, CALORIE .When in the **manual** mode, press this button to set parameters TIME, DISTANCE, CALORIE . Although three parameters can be set, only the last parameter set is accepted . **press mode key will reset and go to idle mode.**

D > “MODE” Button

In ready mode, Press "MODE" button to select the training mode. There are 12 built-in programs to select.

E > “FAST” Button

1. Press the "FAST" button to increase the speed until the proper speed. Hold this key for 3 seconds will quickly increase the speed.
2. In setting mode, pressing "FAST" button changes the parameter (increases).

F > “SLOW” Button

1. Press the "SLOW" button to decrease the speed until the proper speed. Hold this key for 3 seconds will quickly decrease the speed.
2. In setting mode,pressing "SLOW" button to change the parameter(decreases).

G > “RAPID SPEED” Button

Press quick buttons 3, 6 and 9(KPH) or WALK for low speed, JOG for medium speed and RUN for high speed,

Get prepared before using the treadmill

Be sure that the power complies with product specification prior to turning on the treadmill. The red light of the switch comes on and the console shows E0 when the treadmill turns on. Put the safety key in place and clip on the other end to the cloth and be ready for the workout.

Quick Start

1. Place the safety key and the treadmill is in manual mode. Press START/STOP button to begin the workout.
2. The initial speed is 1.0KPH. You can adjust the speed by pressing “FAST”, “**SLOW**” and “RAPID SPEED” buttons.
3. You can press START/STOP button or pull out the safety key, in case of emergency, any time when the treadmill is operating. The speed will slow down gradually till fully stop.
4. While in manual mode, pressing “CLEAR/SET” button sets time, distance and calorie. Pressing FAST and SLOW buttons changes the value. When finish setting, press START/STOP to begin the workout. (The system accepts only the last item set. When the value of the set item is reached, the treadmill stops.)

Handgrip pulse feature

Any time when the treadmill is operating, grasping handgrip shows treadmill pulse feature and the heart beat value is displayed. Grasp firmly while using this feature otherwise the value fluctuates.

Calorie Display

The calorie display shows the value of heat energy consumed during the workout.

Built-in programs

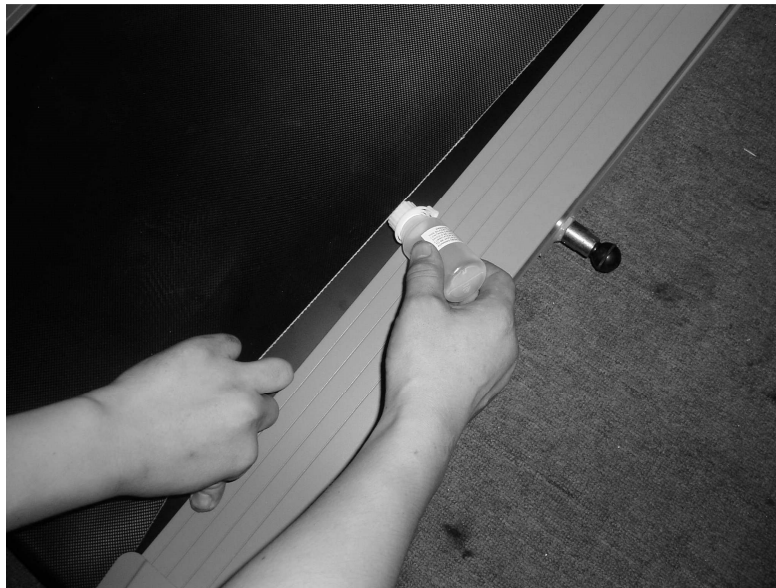
Pressing MODE and there are 12 build-in programs, P1, P2, P3 ... and P12, to choose. The speed varies automatically and hence these programs are not recommended for the beginners or children.

➤ BELT TRACKING ADJUSTMEANT



If during use you notice that walking belt either shifts to the right or the left of center, first remove "Safety Key" and unplug equipment from AC power source. Using **M5** Allen wrench provided, turn left rear roller adjustment as indicated below clockwise no more the 1/4" of a turn. Remove **M5** Allen wrench, insert "Safety Key" and insert AC power cord into AC outlet. Turn on your treadmill and observe after running a few minutes to see if problem has been corrected. This may take several adjustments, so repeat the above procedure.

➤ TREADMILL LUBRICATION



Your treadmill should require little maintenance other than periodically applying lubricant. Lubricating under the treadbelt will ensure superior performance and extend its life expectancy.

HOW TO CHECK TREADBELT FOR PROPER LUBRICATION?

Lift one side of the treadbelt and feel the top surface of the treadboard.

If the surface is slick to the touch, then no further lubrication is required.

If the surface is dry to the touch, apply one packet of lubricant or half of the bottle of lubricant.

HOW TO APPLY LUBRICANT?

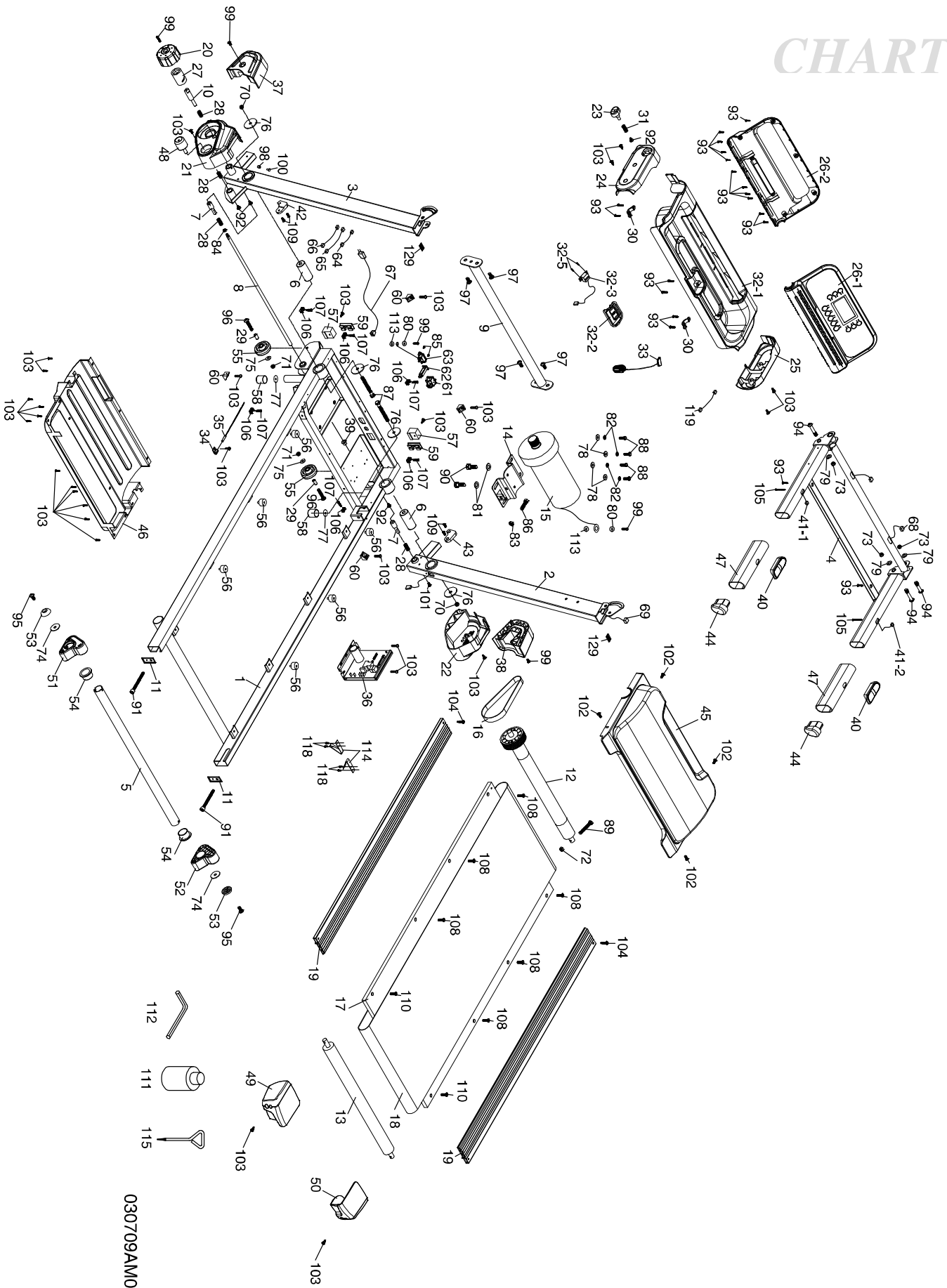
1. Lift one side of treadbelt.
2. Pour one half of the lubricant bottle under the center of the treadbelt on the top surface of the treadboard.
3. Walk on the treadmill at a slow speed for 3 to 5 minutes to evenly distribute lubricant.

NOTE: DO NOT over lubricate treadboard. Any excess lubricant that comes out should be wiped off.

IMPORTANT: ONLY USE HALF THE BOTTLE OF LUBRICANT PER APPLICATION LUBRICATION SCHEDULE.

1. If it's necessary, it's better to lubricate half a bottle when user open carton to use at first time.
2. We suggest if user doesn't apply lubricant at first time, after the first 25 hours of use (2-3 months) need to apply one half bottle of lubricant.
3. Every 100 hours or 300 km of use apply one half bottle of lubricant per exact situation.

OVERVIEW CHART



030709AM0956

PARTS LIST

NO.	DESCRIPTION	Q'TY
1	Main Frame	1
2	Right Upright	1
3	Left Upright	1
4	Console Support	1
5	Inclination Adjustor Bushing Assembly	1
6	Upright Support Axle	2
7	Sprung Latch	2
8	Releasing Bracket Axle	1
9	Handrail Support	1
10	Brake Tension Knob Axle	1
11	Rear Roller Cover	2
12	Front Roller W/Pulley	1
13	Rear Roller	1
14	Motor Bracket	1
15	Motor	1
16	Drive Belt	1
17	Running Deck	1
18	Running Belt	1
19	Foot Rail	2
20	Brake Tension Knob	1
21	Rear Frame Base Cover (L)	1
22	Rear Frame Base Cover (R)	1
23	Release To Push A Button (Top)	1
24	Handgrip Side Cap(L)	1
25	Handgrip Side Cap(R)	1
26	Console Assembly	1
26~1	Console Top Cover	1
26~2	Console Bottom Cover	1
27	Knob Bushing	1
28	Constrict Spring	4
29	Wheel Sleeve	2
30	Beverage Holder Anchor	2
31	Release Spring	1
32~1	Beverage Holder	1
32~2	Safety Key Cover	1
32~3	Safety Switch Module W/ Cable	1
32~5	Ø3 × 10L_Sheet Metal Screw	2
33	Square Safety Key	1
34	Sensor Rack	1
35	1000m/m_Sensor W/Cable	1
36	Motor Controller	1
37	Front Frame Base Cover (L)	1
38	Front Frame Base Cover (R)	1
39	Bushing	1
40	Handpulse Sensor (w/o wire)	2
41~1	1000m/m_Handpulse Wire	1
41~2	700m/m_Handpulse Wire	1
41	1000m/m_Handpulse Wire	2

PARTS LIST

NO.	DESCRIPTION	Q'TY
42	Deck stopper (L)	1
43	Deck stopper (R)	1
44	Handgrip End Cap	2
45	Motor Top Cover	1
46	Frame Cover	1
47	Handgrip Foam	2
48	Release To Push A Button (Bottom)	1
49	Rear Adjustment Base (L)	1
50	Rear Adjustment Base (R)	1
51	Inclination Adjustor (L)	1
52	Inclination Adjustor (R)	1
53	Bolt Cap	2
54	Inclination Adjustor Bushing	2
55	Transportation Wheel	2
56	Rubber Foot	6
57	Foot Pad	2
58	Outer End Cap	2
59	25 × 50m/m_Square End Cap	2
60	Motor Cover Anchor	4
61	On/Off Switch	1
62	Breaker	1
63	Power Socket	1
64	100m/m_Connecting Wire (Black)	1
65	250m/m_Connecting Wire (White)	1
66	250m/m_Connecting Wire (Black)	1
67	Power Cord	1
68	600m/m_Computer Cable(Upper)	1
69	950m/m_Computer Cable(Lower)	1
70	3/8" × UNC16 × 7.0T_Nyloc Nut	2
71	5/16" × UNC18 × 7.0T_Nyloc Nut	2
72	M8 × P1.25 × 7.0T_Nyloc Nut	1
73	M10 × P1.5 × 8T_Nyloc Nut	3
74	Ø8 × Ø35 × 1.5T_Flat Washer	2
75	Ø8 × Ø16 × 1.5T_Flat Washer	2
76	Ø10 × Ø35 × 2.0T_Flat Washer	4
77	Ø8.5 × Ø25.4 × 1.5T_Flat Washer	2
78	Ø10 × Ø25 × 2.0T_Flat Washer	4
79	Ø19 × Ø10 × 1.5T_Flat Washer	3
80	Ø5 × 1.5T_Split Washer	2
81	Ø8 × 1.5T_Split Washer	2
82	Ø10 × 2T_Split Washer	4
83	3/8" × UNC16 × 7T_Nut	1
84	M6 × P1.0 × 5.0T_Nut	1
85	Ø3 × 10L_Sheet Metal Screw	2
86	3/8" × UNC16 × 1-1/4" _Hex Head Bolt	1
87	3/8" × UNC16 × 3-1/2" _Hex Head Bolt	2
88	3/8" × UNC16 × 3/4" _Hex Head Bolt	4
89	M8 × P1.25 × 60L_Hex Head Bolt	1

PARTS LIST

NO.	DESCRIPTION	Q'TY
90	M8 × P1.25 × 12L_Hex Head Bolt	2
91	1/4" × UNC20 × 60L_Socket Head Cap Bolt	2
92	M5 × P0.8 × 10L_Flat Phillips Head Screw	4
93	Ø3.5 × 12L_Sheet Metal Screw	19
94	M10 × P1.5 × 50L_Button Head Socket Bolt	3
95	5/16" × UNC18 × 1"_Button Head Socket Bolt	2
96	5/16" × UNC18 × 42L_Button Head Socket Bolt	2
97	5/16" × UNC18 × 3/4"_Button Head Socket Bolt	4
98	Fastening Bushing	1
99	M5 × P0.8 × 12L_Phillips Head Screw	5
100	M4 × P0.7 × 12L_Phillips Head Screw	1
101	M6 × P1.0 × 15L_Phillips Head Screw	1
102	Ø5 × 16L_Tapping Screw	4
103	Ø5 × 16L_Tapping Screw	28
104	Ø5 × 25L_Tapping Screw	2
105	Ø4 × 56L_Sheet Metal Screw	2
106	Wire Tie Mount	6
107	Ø3.5 × 16L_Tapping Screw	6
108	M6 × P1.0 × 20L_Flat Head Socket Screw	6
109	M5 × P0.8 × 15L_Flat Head Socket Screw	4
110	M6 × P1.0 × 25L_Flat Head Socket Screw	2
111	Lubricant	1
112	L Allen Wrench	1
113	M5_Star Washer	2
114	Belt Guide	2
115	Short Phillips Head Screw Driver	1
116	Ø5 × 19L_Tapping Screw	1
118	Ø4 × 12L_Sheet Metal Screw	4
119	1200m/m_Safety Switch Wire	1
129	Rubber Pad	2



GARLANDO SPA
Via Regione Piemonte, 32 - Zona Industriale D1
15068 - Pozzolo Formigaro (AL) - Italy
www.toorx.it - info@toorx.it