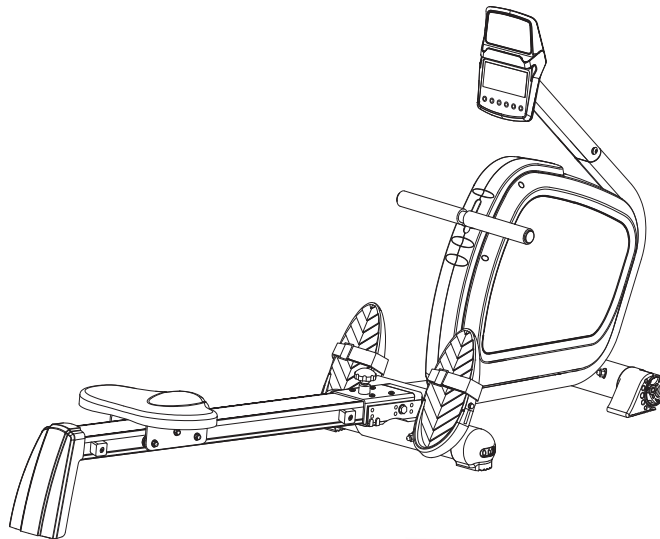


TOORX
FITNESS IN MOTION

MANUEL D'UTILISATION

CHRONO  LINE



RWX500



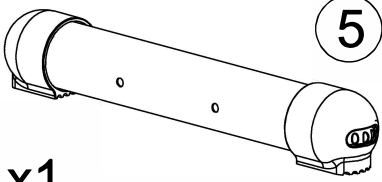
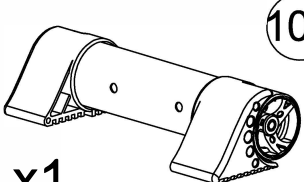
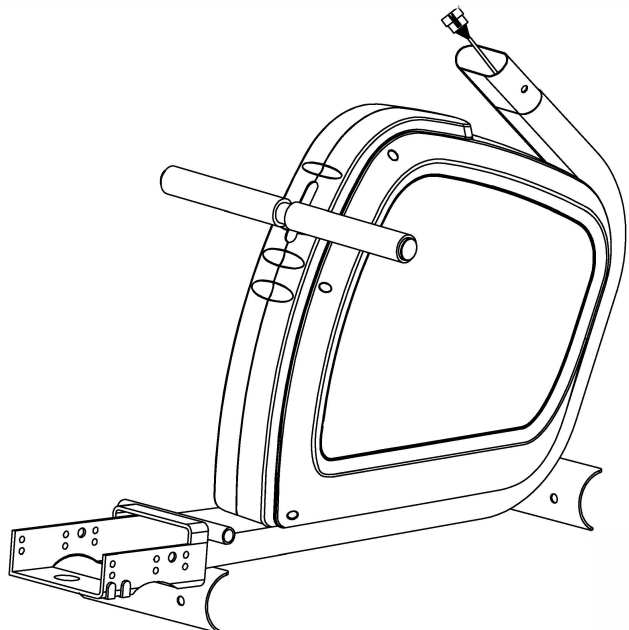

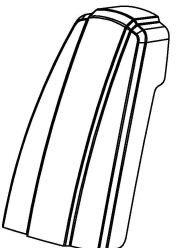
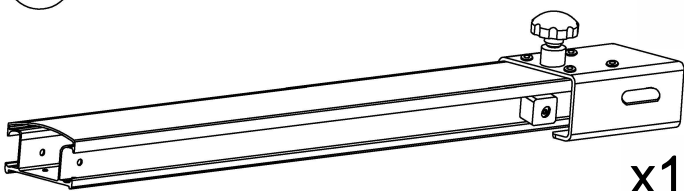

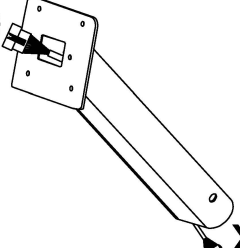
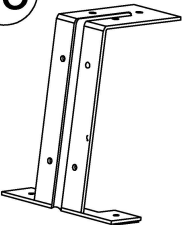
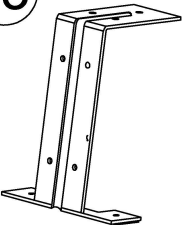
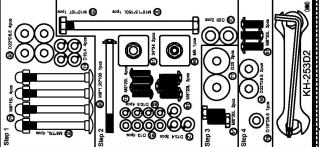


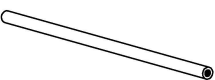
Cod: GRLDTOORXRWX500

Rev : 02

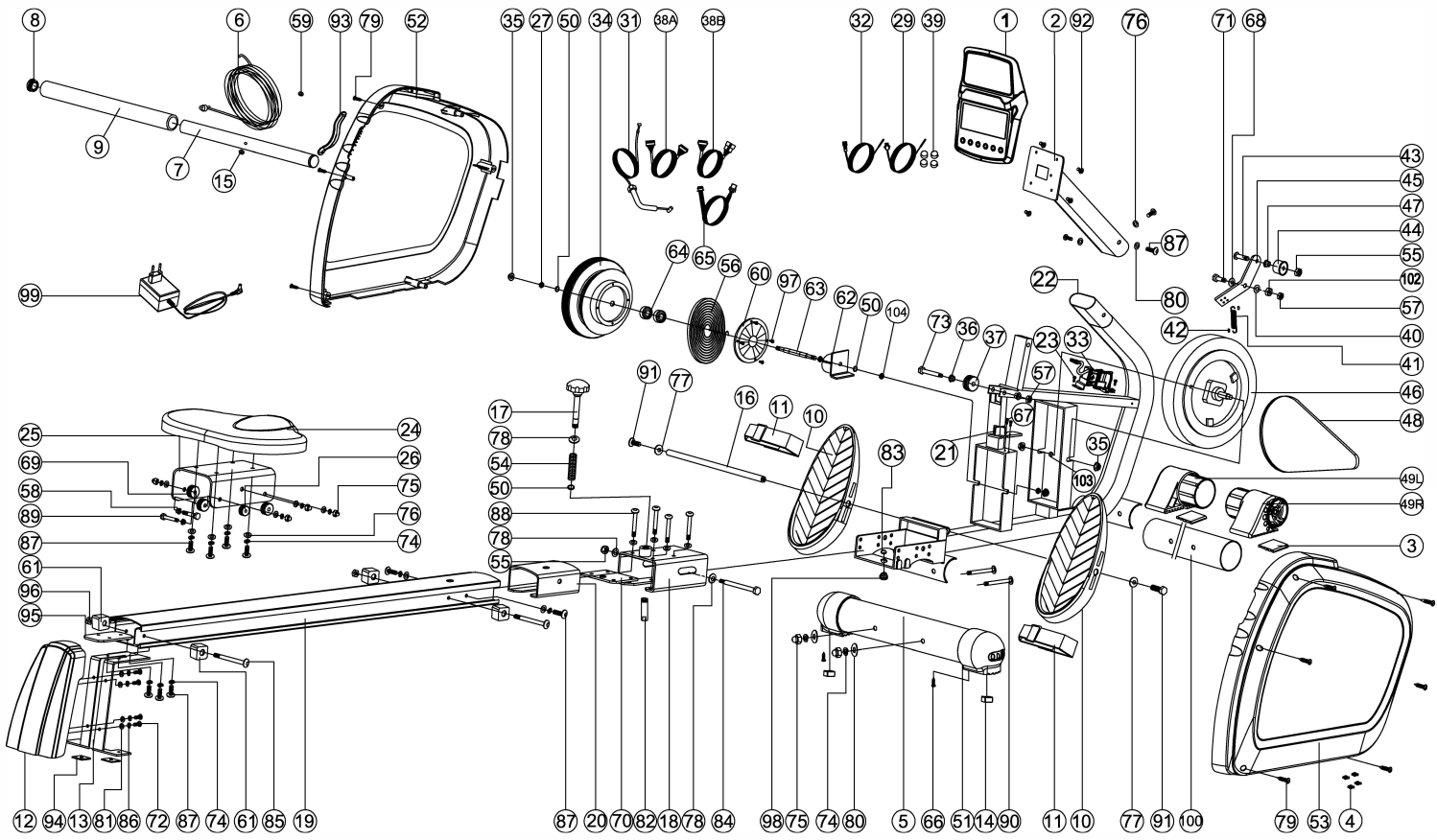
Ed : 09/17



Liste de contrôle

 <p>5 x1</p>	 <p>100 x1</p>	 <p>22 x1</p>			
 <p>1 x1</p>	 <p>12 x1</p>			 <p>19 x1</p>	
 <p>10 x1</p>	 <p>2 x1</p>				
 <p>25 x1</p>	 <p>13 x1</p>	 <p>95 x1</p>			
 <p>95 x2</p>	 <p>99 x1</p>			 <p>16 x1</p>	

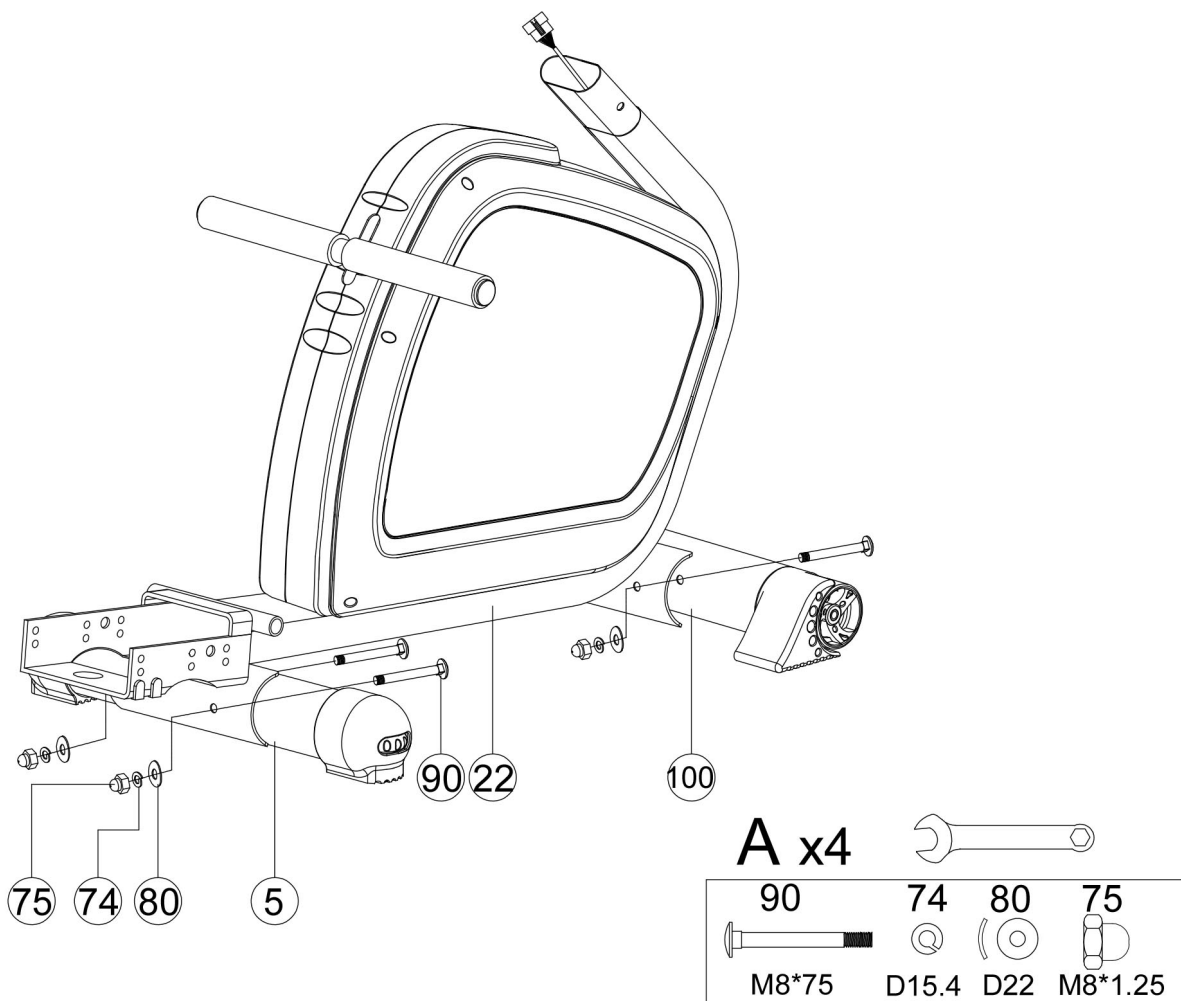
VUE ÉCLATÉE



LISTE DES PIÈCES DÉTACHÉES

Part no.	Description	Specification	Q'ty	Part no.	Description	Specification	Q'ty
1	Computer	B31866	1	54	Spring	D13*D1.2*85.5L	1
2	Handlebar post welding set		1	55	Anti-loosen nut M10x1.5x10T	M10x1.5x10T	2
3	Front anti-slip pad	44.6*50*5.3	2	56	Volute spring 20*0.8T	20*0.8T	1
4	Pin	D6*26.5*7.7	2	57	Anti-loosen nut M8*1.25*8T	M8*1.25*8T	2
5	stabilizer	D60x1.5Tx440L	1	58	Bushing of pulley axle	D12*D8.2*12.6L	6
6	Pulling rope	D5*2000L	1	59	Buffer	D11*7L	1
7	Foam roller	D25.4*400*1.4T	1	60	Fixing plate for spring	D121*3T	1
8	Half-ball cap	D25.4*31L	2	61	Square buffer	34*34*22T	4
9	Foam	D23x4Tx400L	1	62	Fixing bracket for volute spring		1
10	Foot pedal	315*137.5*67	2	63	Flywheel axle	D10*120.7	1
11	Strap	440*50	2	64	Bearing #6000ZZ	#6000ZZ	2
12	Rear cover	330*196*69	1	65	Electrical cable	700L	1
13	Rear supporting bracket set		1	66	Cross screw	ST4x1.41x10L	2
14	Rear anti-slip pad	19.4*19.4*11.5L	2	67	Cross screw M5*0.8*10L	M5*0.8*10L	2
15	Bushing	D10.5*D7.5*9T	1	68	Flat washer D21*D8.5*1.5T	D21*D8.5*1.5T	1
16	Horizontal axle	D12*436L	1	69	Pulley	D37.4*D8*11	4
17	Ball knob	D50*M10*1.5*115.5L	1	70	Reinforce plate	100*78*3T	1
18	Pulley bracket	JD2300	1	71	Hex bolt	M8*25	1
19	Sliding beam	115*69.5*1210L	1	72	Cross screw M6*1.0*20L	M6*1.0*20L	4
20	Supporting fixing set	63*59*110*3T	1	73	Ladder screw M8*1.25*55.5L	M8*1.25*55.5L	1
21	Fixing set for sensor	30*28*21	1	74	Spring washer D15.4*D8.2*2T	D15.4*D8.2*2T	16
22	Main frame		1	75	Domed nut	M8x1.25x15L	10
23	Cross bolt ST4.2*15L	ST4.2*1.4*15L	2	76	Flat washer D16xD8.5x1.2T	D16xD8.5x1.2T	17
24	Seat	380*280*35,DD-PU21-5	1	77	Flat washer D25*D8.5x2.0T	D25*D8.5x2.0T	2
25	Supporting bracket for seat		1	78	Flat washer D20*D11*2T	D20*D11*2T	3
26	Pulley	D32*D18*10	2	79	Cross screw ST4.2*1.4*20L	ST4.2x1.4x20L	7
27	Hex nut D9.5x5T	D9.5x5T(3/8"-26UNF)	1	80	Curved washer D22*D8.5*1.5T	D22*D8.5*1.5T	6
29	Sensor(-)	350L	1	81	Flat washer	D13*D6.5*1.0T	4
31	Tension cable	D1.2*410	1	82	Connecting axle cover	M20*2.5*62L	1
32	Sensor	350L	1	83	C ring S-16(1T)	S-16(1T)	2
33	Motor	D10001	1	84	bolt M10*1.5*150L	M10*1.5*150L	1
34	Wheel for pulling rope	D160*76L	1	85	Hex bolt M8*1.25*100L	M8*1.25*100L	2
35	Anti-loosen nut 3/8"-26UNFx6.5T	3/8"-26UNFx6.5T	4	86	Spring washer D10.5*D6.1*1.3T	D10.5*D6.1*1.3T	4
36	Bushing	D13.5*D10*9	2	87	Allen bolt M8*1.25*20L	M8x1.25x20L	12
37	Pulley	D45*26L	1	88	Allen bolt M8*1.25*75L	M8x1.25x75L	4
38A	Upper computer cable	450L	1	89	Hex bolt M8*1.25*35L	M8x1.25x35L	6
38B	Lower computer cable	750L	1	90	bolt M8x1.25x75L	M8x1.25x75L	4
39	Round magnet	S10042	4	91	Hex screw M8*1.25*20L	M8*1.25*20L	2
40	Plastic flat washer D10*D24*0.4T	D10*D24*0.4T	1	92	cross screw M5*0.8*10L	M5*0.8*10L	4
41	Spring D2.2*D14*65L	D2.2*D14*65L	1	93	Guide plate of pull cable		1
42	Plastic cover D3*30L	D3*30L	2	94	Square buffer	35*35	2
43	Allen bolt M10*35L	M10*35L	1	95	Fixing plate	93*50*4T	1
44	Idle wheel	D42*D38*24	1	96	Hex nut M8*P1.25*6T	M8*P1.25*6T	2
45	Fixing plate for Idle wheel	156*62.2*5T	1	97	cross screw ST4.2*15L	ST4.2*15L	4
46	Magnet system	D232*122L	1	98	Fixing nut M10*1.5*13	M10*1.5*13	1
47	Bushing D20*D14*11.5	D20*D14*11.5	1	99	Adaptor	Output: 9V 1A	1
48	Belt	300 PJ5	1	100	Front stabilizer	D60x1.5Tx300L	1
49L	Front foot cap (L)	D60*83 L	1	102	Allen nut	M8*1.25*6T	1
49R	Front foot cap (R)	D60*83 L	1	103	Small spacer	D10*D14*3T	1
50	C-ring S-10(1T)	S-10(1T)	3	104	nut	D9.5*4T(3/8"-26UNF)*4T	2
51	Adjustable foot cap	D60*79 L	2	/	spanner	139*5T	2
52	Left chain cover	594*80.3*495	1	/	Allen cross spanner	M6	1
53	Right chain cover	594*76*495	1				

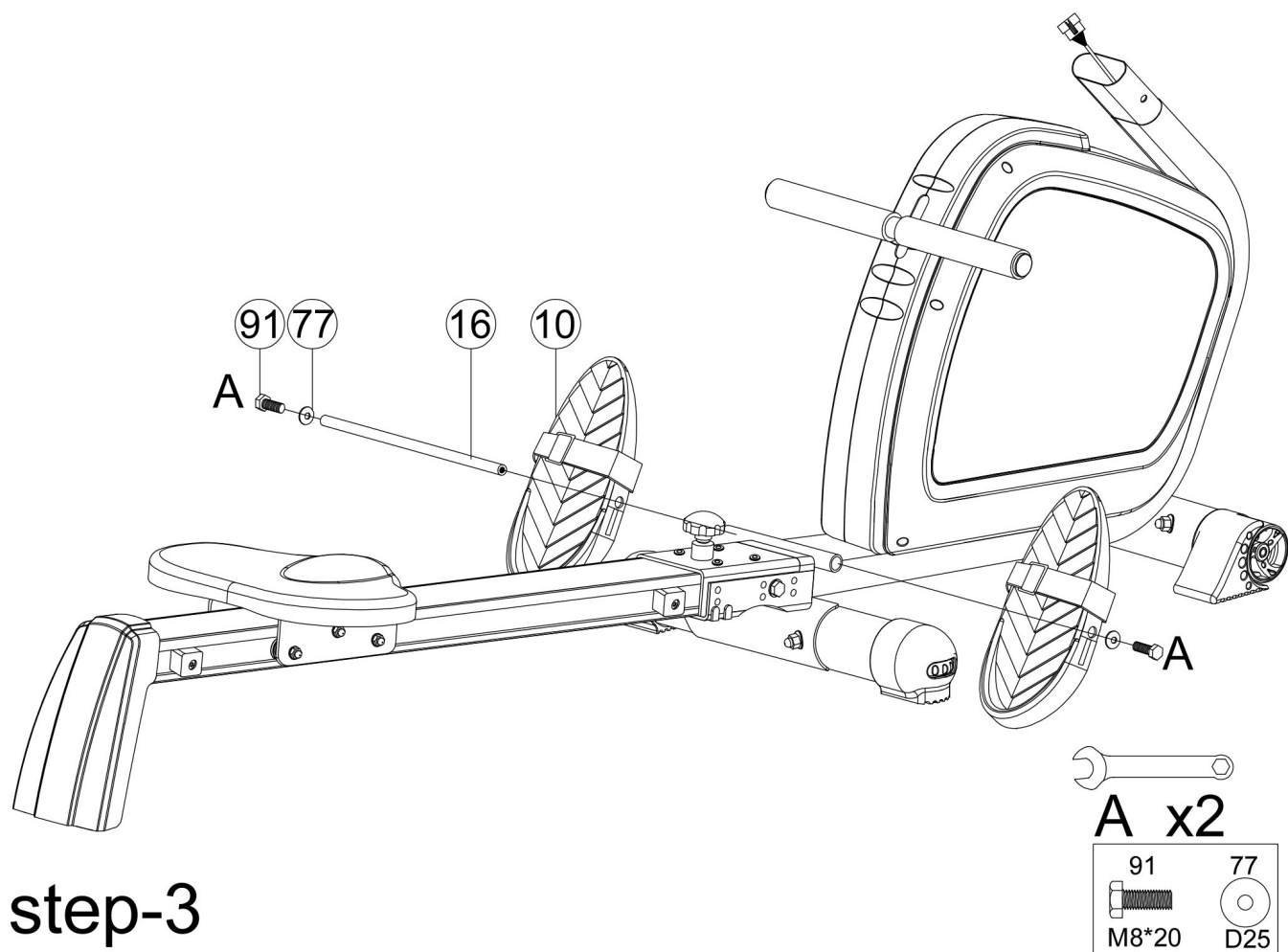
Assemblage étape 1 :



A. Assembler le stabilisateur arrière (5) au châssis principal (22) à l'aide d'une rondelle élastique (74), d'un boulon de fixation (75), d'une rondelle courbée (80) et d'un boulon à collet carré (90).

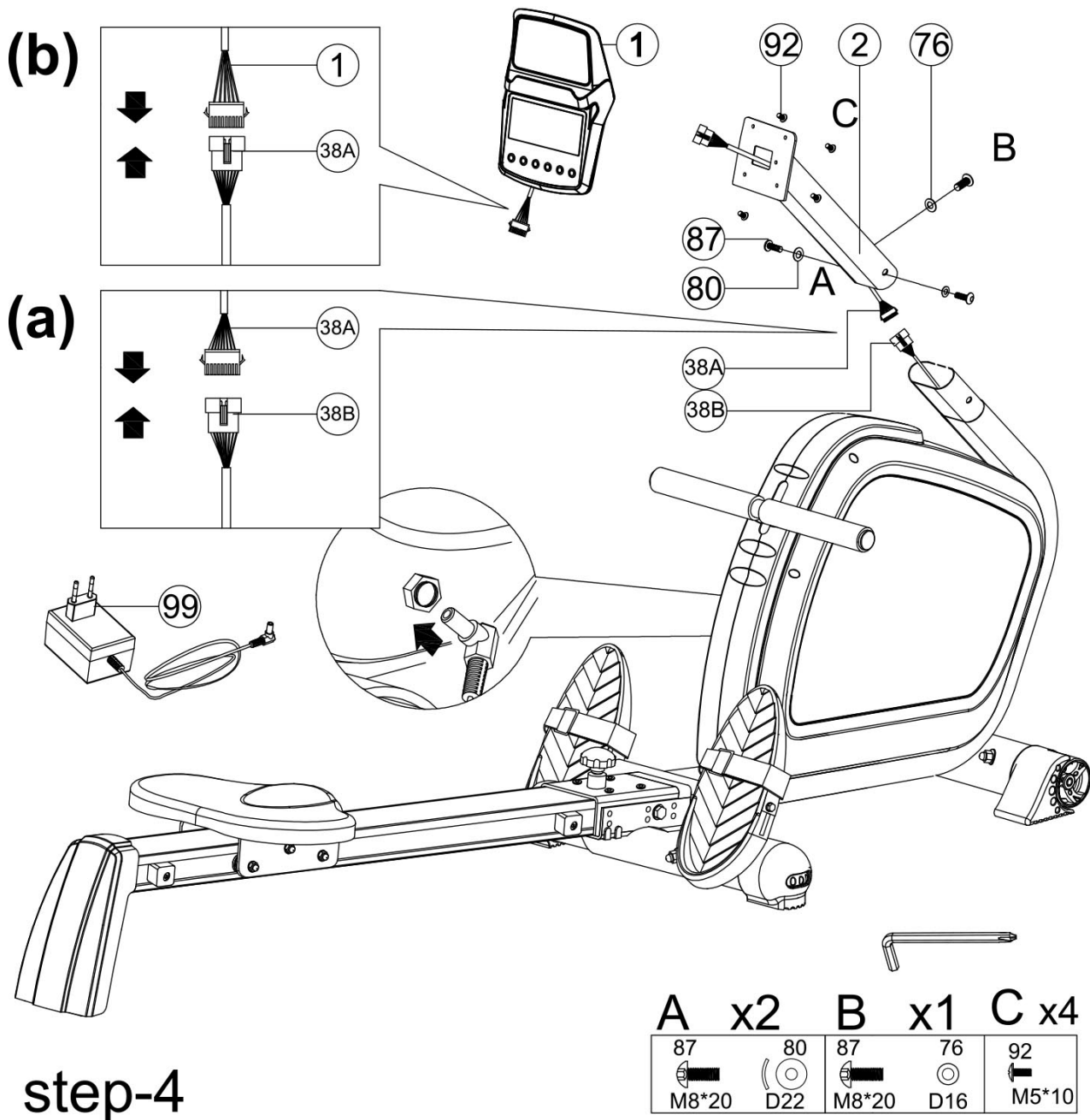
B. Assembler le stabilisateur avant (100) au châssis principal (22) à l'aide d'une rondelle élastique (74), d'un boulon de fixation (75), d'une rondelle courbée (80) et d'un boulon à collet carré (90).

Assemblage étape 3 :



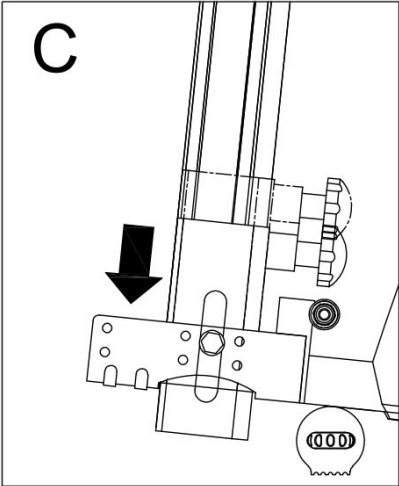
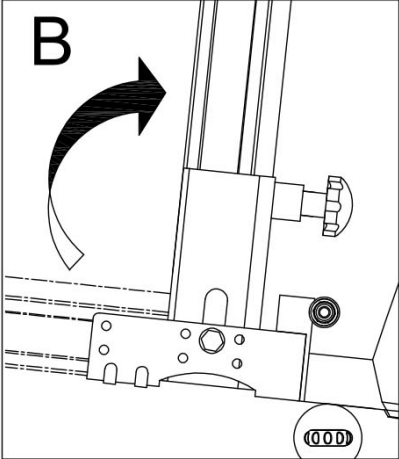
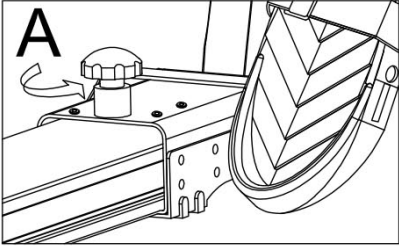
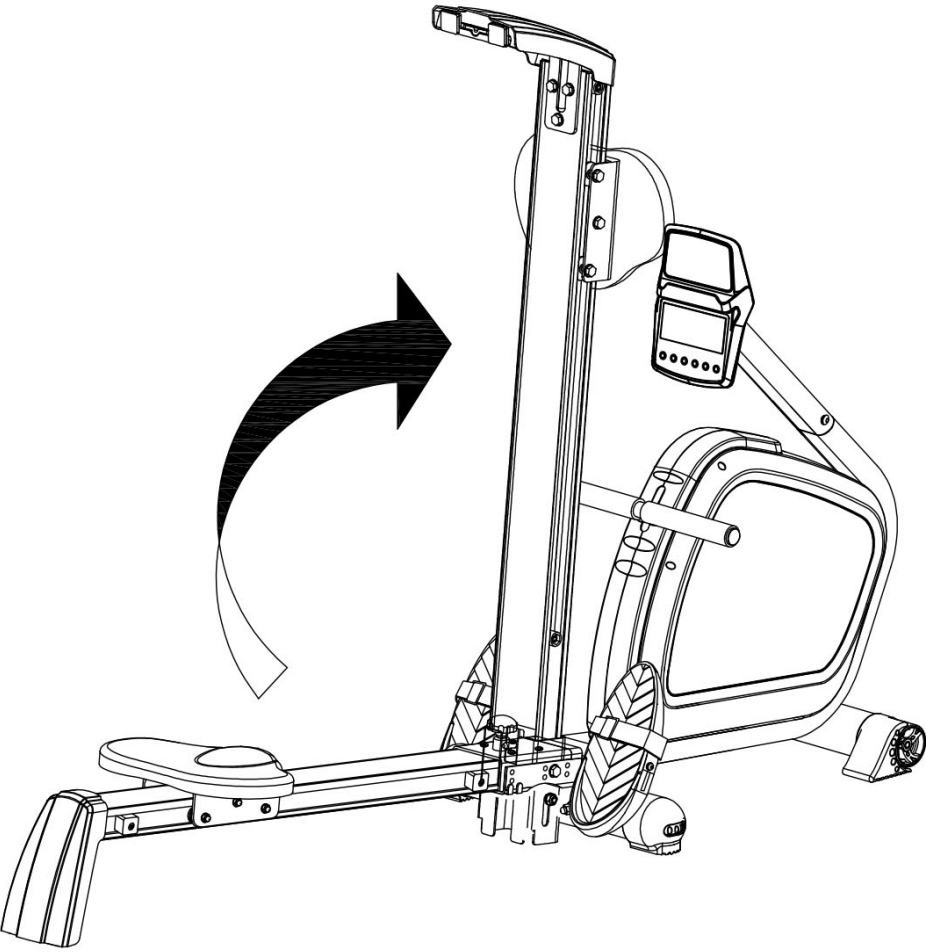
A, Assembler la pédale (10) à l'aide de l' Axe (16), d'une rondelle plate (77) et d'un boulon (91).

Assemblage étape 4 :



- 1) Brancher le câble supérieur de l'ordinateur (38A) & le câble inférieur de l'ordinateur (38B), le câble (—)(28) du capteur (29) inférieur de l'ordinateur, le câble du (30) capteur inférieur de l'ordinateur (—) (32) puis assemblez la potence du guidon (2) au châssis principal avec une rondelle plate (76), une rondelle courbée (80) et une vis à six pans (87) comme illustré sur la figure.
- 2) Connexion du câble (—) (28) inférieur de l'ordinateur, du câble inférieur de l'ordinateur (30) et du câble supérieur de l'ordinateur (38A) avec les câbles reliés à l'ordinateur (1) comme illustré sur la figure. Monter l'ordinateur (1) sur la potence du guidon (2) à l'aide d'un boulon (92) comme illustré sur la figure.
- 3) Assembler l'adaptateur et allumer l'ordinateur.

Appareil repliable :





GARLANDO SPA
Via Regione Piemonte, 32 - Zona Industriale D1
15068 - Pozzolo Formigaro (AL) - Italy
www.toorx.it - info@toorx.it