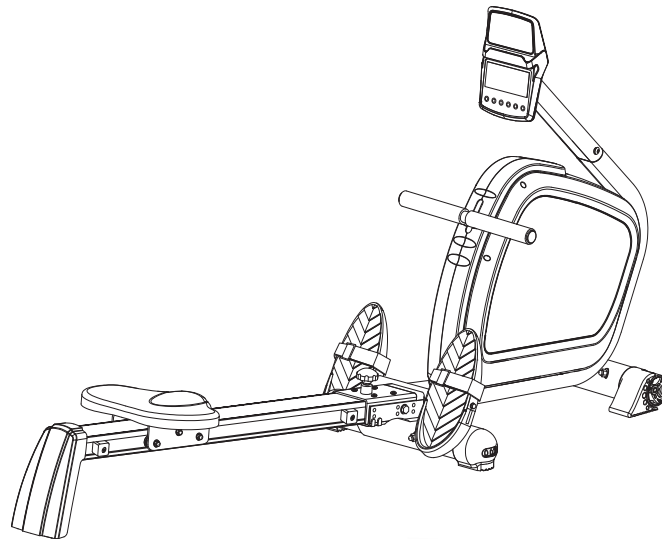


TOORX
FITNESS IN MOTION

BEDIENUNGSANLEITUNG

CHRONO  LINE



RWX500



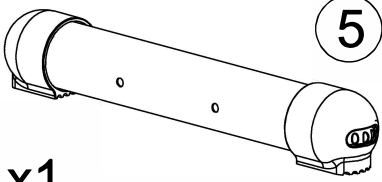
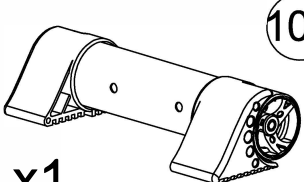
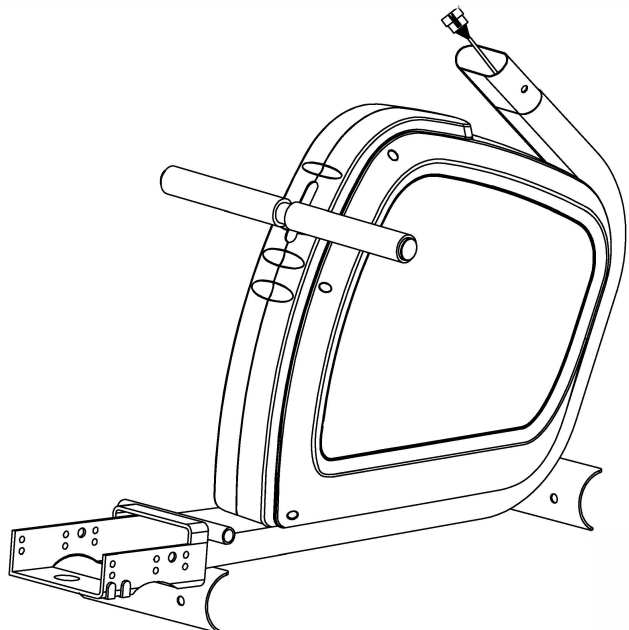

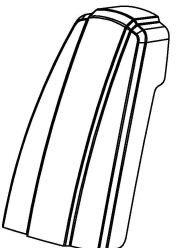
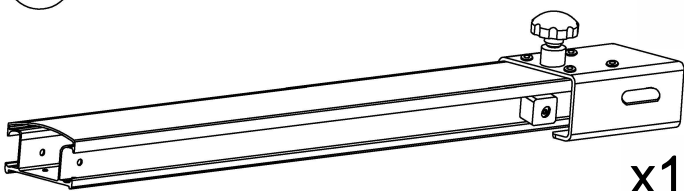

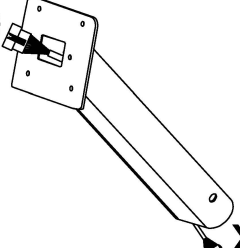
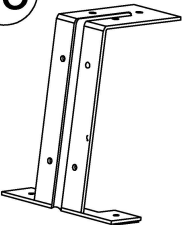
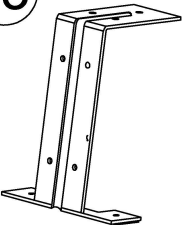
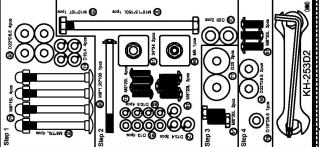


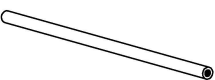
Cod: GRLDTOORXRWX500

Rev : 02

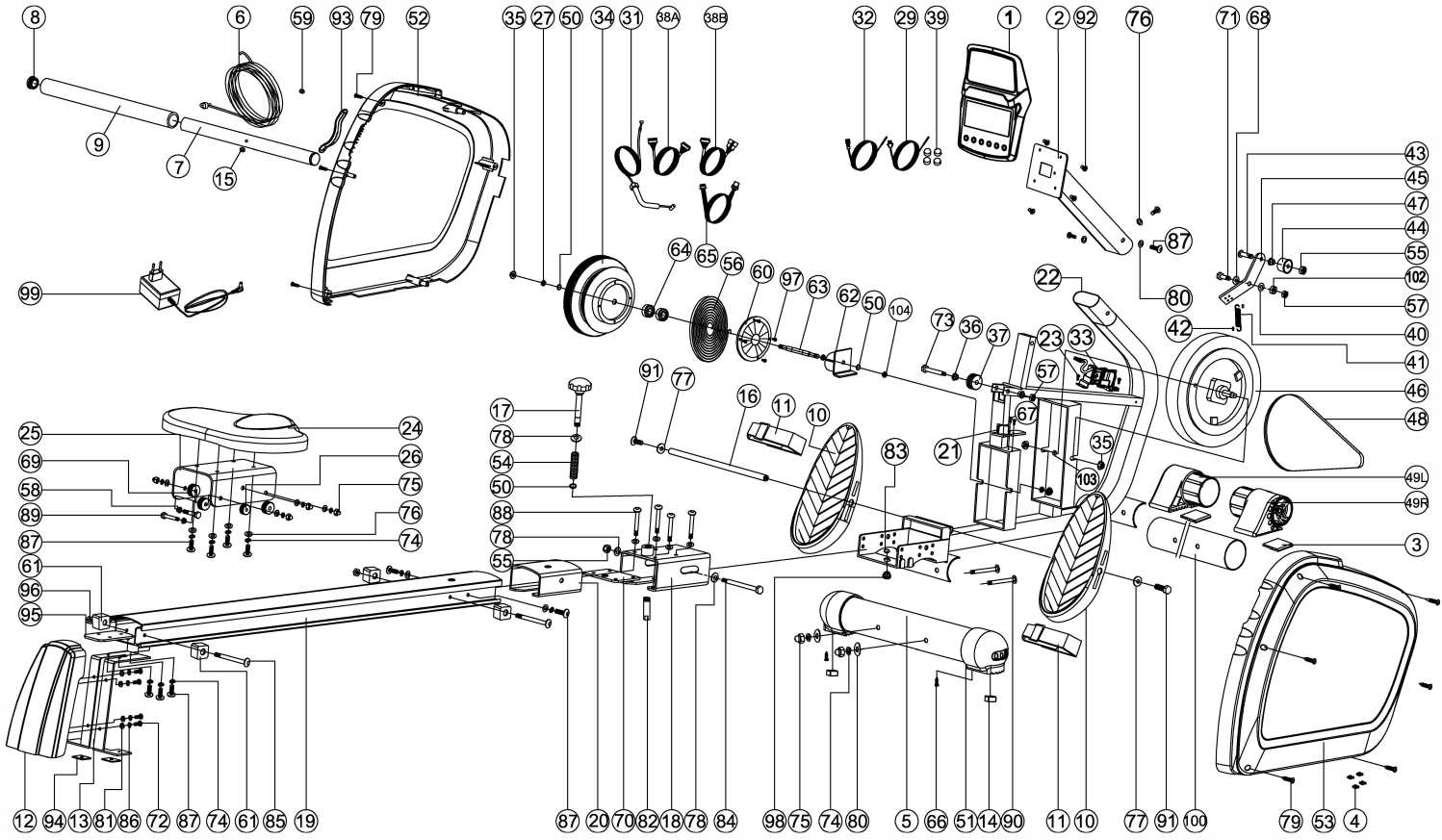
Ed : 09/17



Checkliste

| | | | | | |
|--|--|---|--|---|--|
|  <p>5 x1</p> |  <p>100 x1</p> |  <p>22 x1</p> | | | |
|  <p>1 x1</p> |  <p>12 x1</p> | | |  <p>19 x1</p> | |
|  <p>10 x1</p> |  <p>2 x1</p> | | | | |
|  <p>25 x1</p> |  <p>13 x1</p> |  <p>95 x1</p> | | | |
|  <p>95 x2</p> | | | |  <p>99 x1</p> |  <p>16 x1</p> |

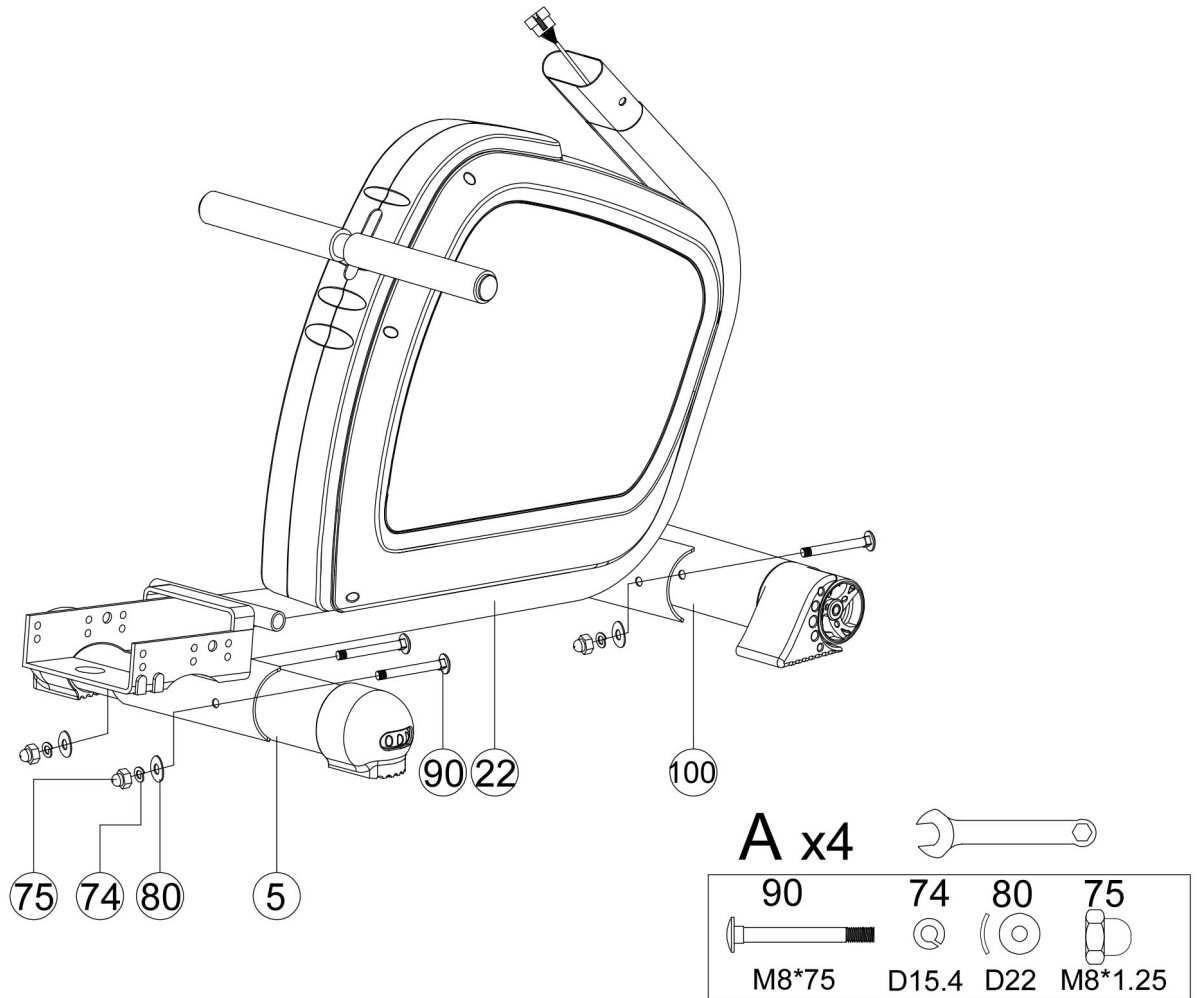
ÜBERSICHTSZEICHNUNG



PART LIST

| Part no. | Description | Specification | Q'ty | Part no. | Description | Specification | Q'ty |
|----------|----------------------------------|----------------------|------|----------|----------------------------------|------------------------|------|
| 1 | Computer | B31866 | 1 | 54 | Spring | D13*D1.2*85.5L | 1 |
| 2 | Handlebar post welding set | | 1 | 55 | Anti-loosen nut M10x1.5x10T | M10x1.5x10T | 2 |
| 3 | Front anti-slip pad | 44.6*50*5.3 | 2 | 56 | Volute spring 20*0.8T | 20*0.8T | 1 |
| 4 | Pin | D6*26.5*7.7 | 2 | 57 | Anti-loosen nut M8*1.25*8T | M8*1.25*8T | 2 |
| 5 | stabilizer | D60x1.5Tx440L | 1 | 58 | Bushing of pulley axle | D12*D8.2*12.6L | 6 |
| 6 | Pulling rope | D5*2000L | 1 | 59 | Buffer | D11*7L | 1 |
| 7 | Foam roller | D25.4*400*1.4T | 1 | 60 | Fixing plate for spring | D121*3T | 1 |
| 8 | Half-ball cap | D25.4*31L | 2 | 61 | Square buffer | 34*34*22T | 4 |
| 9 | Foam | D23x4Tx400L | 1 | 62 | Fixing bracket for volute spring | | 1 |
| 10 | Foot pedal | 315*137.5*67 | 2 | 63 | Flywheel axle | D10*120.7 | 1 |
| 11 | Strap | 440*50 | 2 | 64 | Bearing #6000ZZ | #6000ZZ | 2 |
| 12 | Rear cover | 330*196*69 | 1 | 65 | Electrical cable | 700L | 1 |
| 13 | Rear supporting bracket set | | 1 | 66 | Cross screw | ST4x1.41x10L | 2 |
| 14 | Rear anti-slip pad | 19.4*19.4*11.5L | 2 | 67 | Cross screw M5*0.8*10L | M5*0.8*10L | 2 |
| 15 | Bushing | D10.5*D7.5*9T | 1 | 68 | Flat washer D21*D8.5*1.5T | D21*D8.5*1.5T | 1 |
| 16 | Horizontal axle | D12*436L | 1 | 69 | Pulley | D37.4*D8*11 | 4 |
| 17 | Ball knob | D50*M10*1.5*115.5L | 1 | 70 | Reinforce plate | 100*78*3T | 1 |
| 18 | Pulley bracket | JD2300 | 1 | 71 | Hex bolt | M8*25 | 1 |
| 19 | Sliding beam | 115*69.5*1210L | 1 | 72 | Cross screw M6*1.0*20L | M6*1.0*20L | 4 |
| 20 | Supporting fixing set | 63*59*110*3T | 1 | 73 | Ladder screw M8*1.25*55.5L | M8*1.25*55.5L | 1 |
| 21 | Fixing set for sensor | 30*28*21 | 1 | 74 | Spring washer D15.4*D8.2*2T | D15.4*D8.2*2T | 16 |
| 22 | Main frame | | 1 | 75 | Domed nut | M8x1.25x15L | 10 |
| 23 | Cross bolt ST4.2*15L | ST4.2*1.4*15L | 2 | 76 | Flat washer D16xD8.5x1.2T | D16xD8.5x1.2T | 17 |
| 24 | Seat | 380*280*35,DD-PU21-5 | 1 | 77 | Flat washer D25*D8.5x2.0T | D25*D8.5x2.0T | 2 |
| 25 | Supporting bracket for seat | | 1 | 78 | Flat washer D20*D11*2T | D20*D11*2T | 3 |
| 26 | Pulley | D32*D18*10 | 2 | 79 | Cross screw ST4.2*1.4*20L | ST4.2x1.4x20L | 7 |
| 27 | Hex nut D9.5x5T | D9.5x5T(3/8"-26UNF) | 1 | 80 | Curved washer D22*D8.5*1.5T | D22*D8.5*1.5T | 6 |
| 29 | Sensor(-) | 350L | 1 | 81 | Flat washer | D13*D6.5*1.0T | 4 |
| 31 | Tension cable | D1.2*410 | 1 | 82 | Connecting axle cover | M20*2.5*62L | 1 |
| 32 | Sensor | 350L | 1 | 83 | C ring S-16(1T) | S-16(1T) | 2 |
| 33 | Motor | D10001 | 1 | 84 | bolt M10*1.5*150L | M10*1.5*150L | 1 |
| 34 | Wheel for pulling rope | D160*76L | 1 | 85 | Hex bolt M8*1.25*100L | M8*1.25*100L | 2 |
| 35 | Anti-loosen nut 3/8"-26UNFx6.5T | 3/8"-26UNFx6.5T | 4 | 86 | Spring washer D10.5*D6.1*1.3T | D10.5*D6.1*1.3T | 4 |
| 36 | Bushing | D13.5*D10*9 | 2 | 87 | Allen bolt M8*1.25*20L | M8x1.25x20L | 12 |
| 37 | Pulley | D45*26L | 1 | 88 | Allen bolt M8*1.25*75L | M8x1.25x75L | 4 |
| 38A | Upper computer cable | 450L | 1 | 89 | Hex bolt M8*1.25*35L | M8x1.25x35L | 6 |
| 38B | Lower computer cable | 750L | 1 | 90 | bolt M8x1.25x75L | M8x1.25x75L | 4 |
| 39 | Round magnet | S10042 | 4 | 91 | Hex screw M8*1.25*20L | M8*1.25*20L | 2 |
| 40 | Plastic flat washer D10*D24*0.4T | D10*D24*0.4T | 1 | 92 | cross screw M5*0.8*10L | M5*0.8*10L | 4 |
| 41 | Spring D2.2*D14*65L | D2.2*D14*65L | 1 | 93 | Guide plate of pull cable | | 1 |
| 42 | Plastic cover D3*30L | D3*30L | 2 | 94 | Square buffer | 35*35 | 2 |
| 43 | Allen bolt M10*35L | M10*35L | 1 | 95 | Fixing plate | 93*50*4T | 1 |
| 44 | Idle wheel | D42*D38*24 | 1 | 96 | Hex nut M8*P1.25*6T | M8*P1.25*6T | 2 |
| 45 | Fixing plate for Idle wheel | 156*62.2*5T | 1 | 97 | cross screw ST4.2*15L | ST4.2*15L | 4 |
| 46 | Magnet system | D232*122L | 1 | 98 | Fixing nut M10*1.5*13 | M10*1.5*13 | 1 |
| 47 | Bushing D20*D14*11.5 | D20*D14*11.5 | 1 | 99 | Adaptor | Output: 9V 1A | 1 |
| 48 | Belt | 300 PJ5 | 1 | 100 | Front stabilizer | D60x1.5Tx300L | 1 |
| 49L | Front foot cap (L) | D60*83 L | 1 | 102 | Allen nut | M8*1.25*6T | 1 |
| 49R | Front foot cap (R) | D60*83 L | 1 | 103 | Small spacer | D10*D14*3T | 1 |
| 50 | C-ring S-10(1T) | S-10(1T) | 3 | 104 | nut | D9.5*4T(3/8"-26UNF)*4T | 2 |
| 51 | Adjustable foot cap | D60*79 L | 2 | / | spanner | 139*5T | 2 |
| 52 | Left chain cover | 594*80.3*495 | 1 | / | Allen cross spanner | M6 | 1 |
| 53 | Right chain cover | 594*76*495 | 1 | | | | |

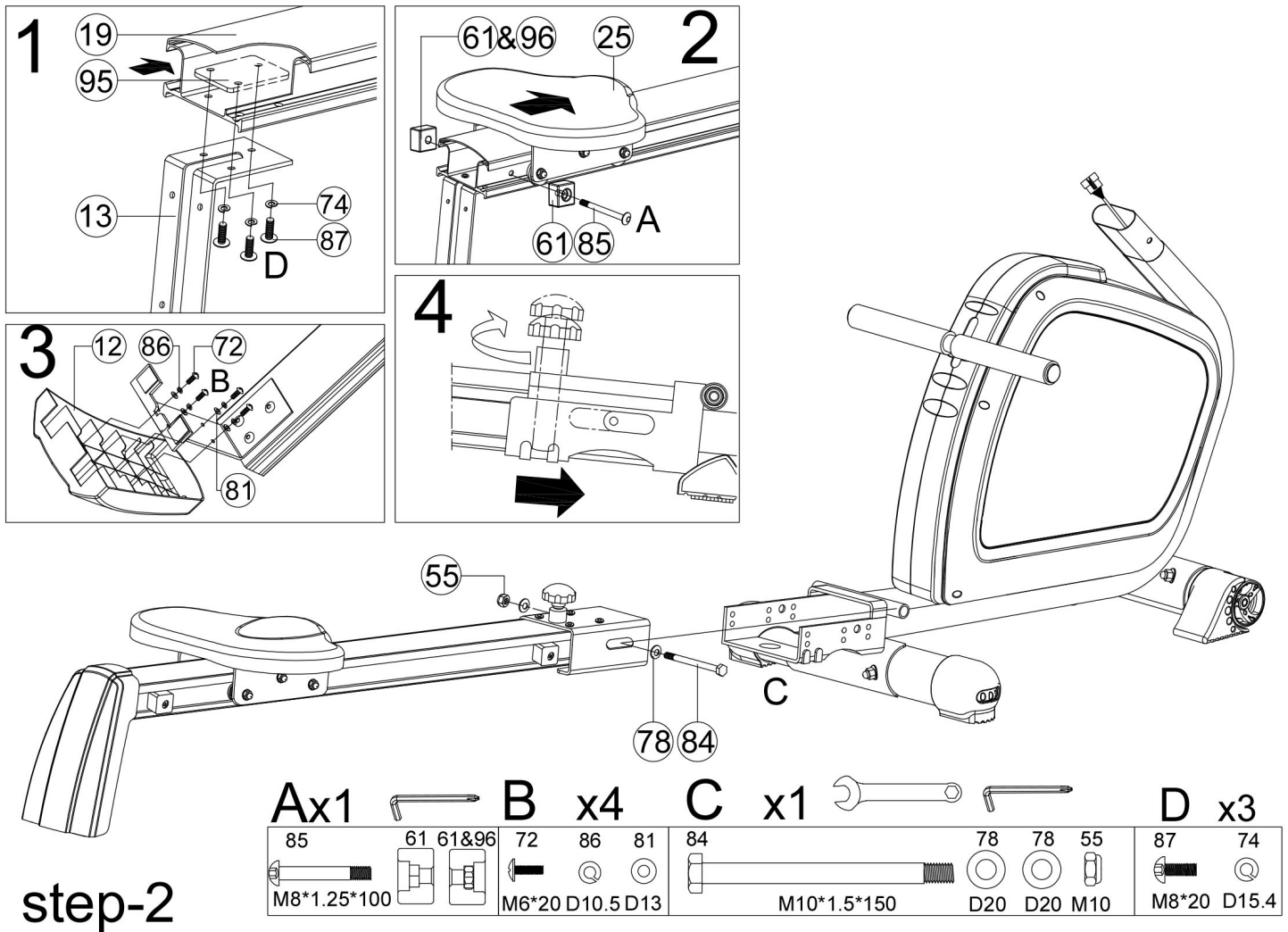
Montageschritt 1 :



A. Den hinteren Standfuß (5) mit Federscheibe (74), Hutmutter (75), Federscheibe (80) und Vierkantschraube (90) am Hauptrahmen (22) montieren.

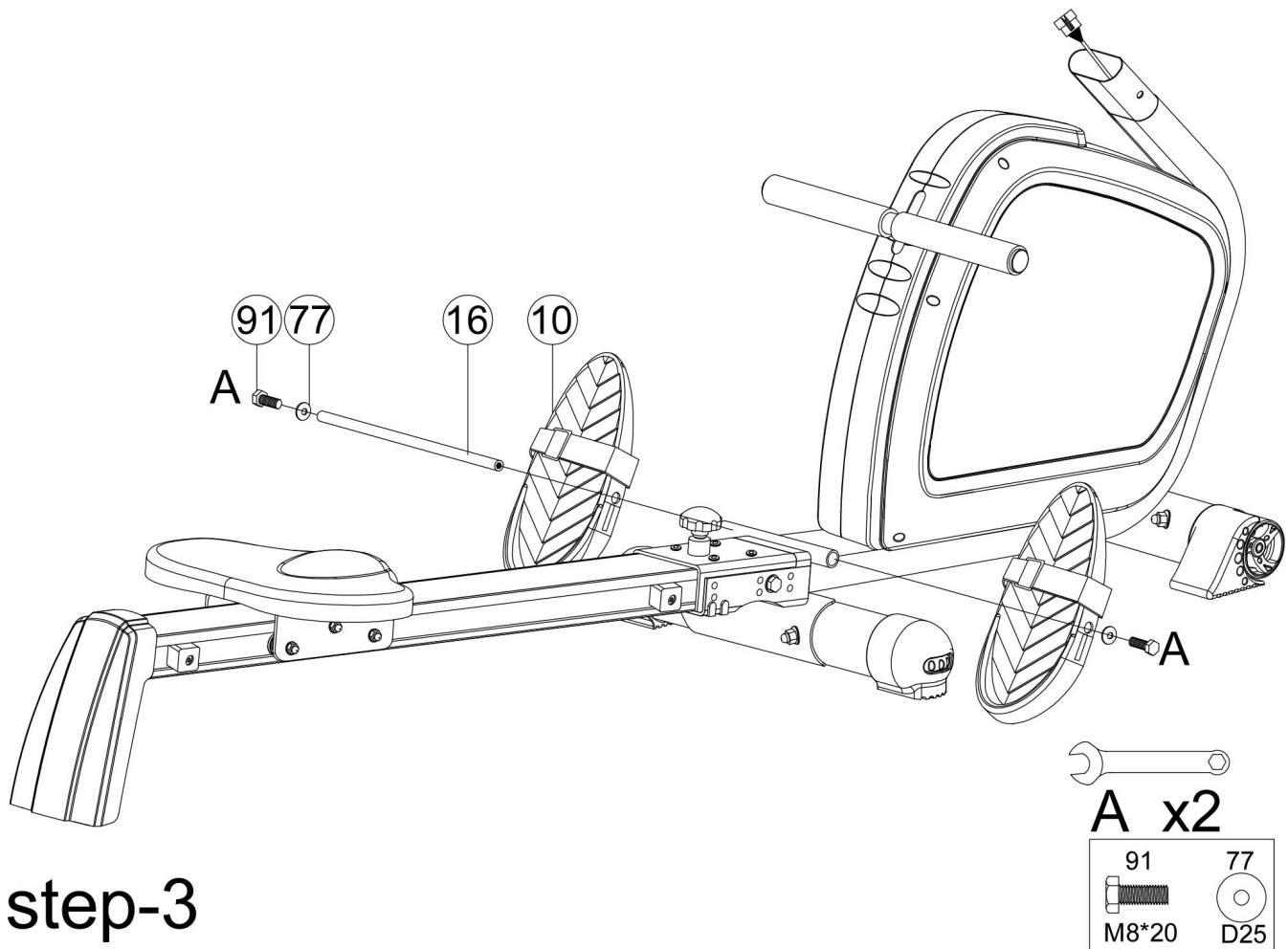
B. Den vorderen Standfuß (100) mit Federscheibe (74), Hutmutter (75), Federscheibe (80) und Vierkantschraube (90) am Hauptrahmen (22) montieren.

Montageschritt 2 :



- A. Den hinteren Halterungssatz (13) mit Gleitführung (19) durch Befestigungsplatte (95), Federscheibe (74) und Inbusschraube (87) wie abgebildet montieren.
- B. Die Sitzhalterung (25) mit dem Vierkantstopfen (61), der Mutter (96) und dem Bolzen (85) wie abgebildet an der Gleitführung (19) montieren.
- C. Die hintere Abdeckung (12) mit der hinteren Montageplatte (13) mit der Schraube (72), Unterlegscheibe (81) und Federscheibe (86) wie abgebildet montieren.
- D. Den gesamten Gleitführungssatz mit Hauptrahmen mit Nylonmutter (55), Unterlegscheibe (78) und Schraube (84) montieren. Sie können die Gleitführung mit der Griffschraube (17) zusammenklappen.

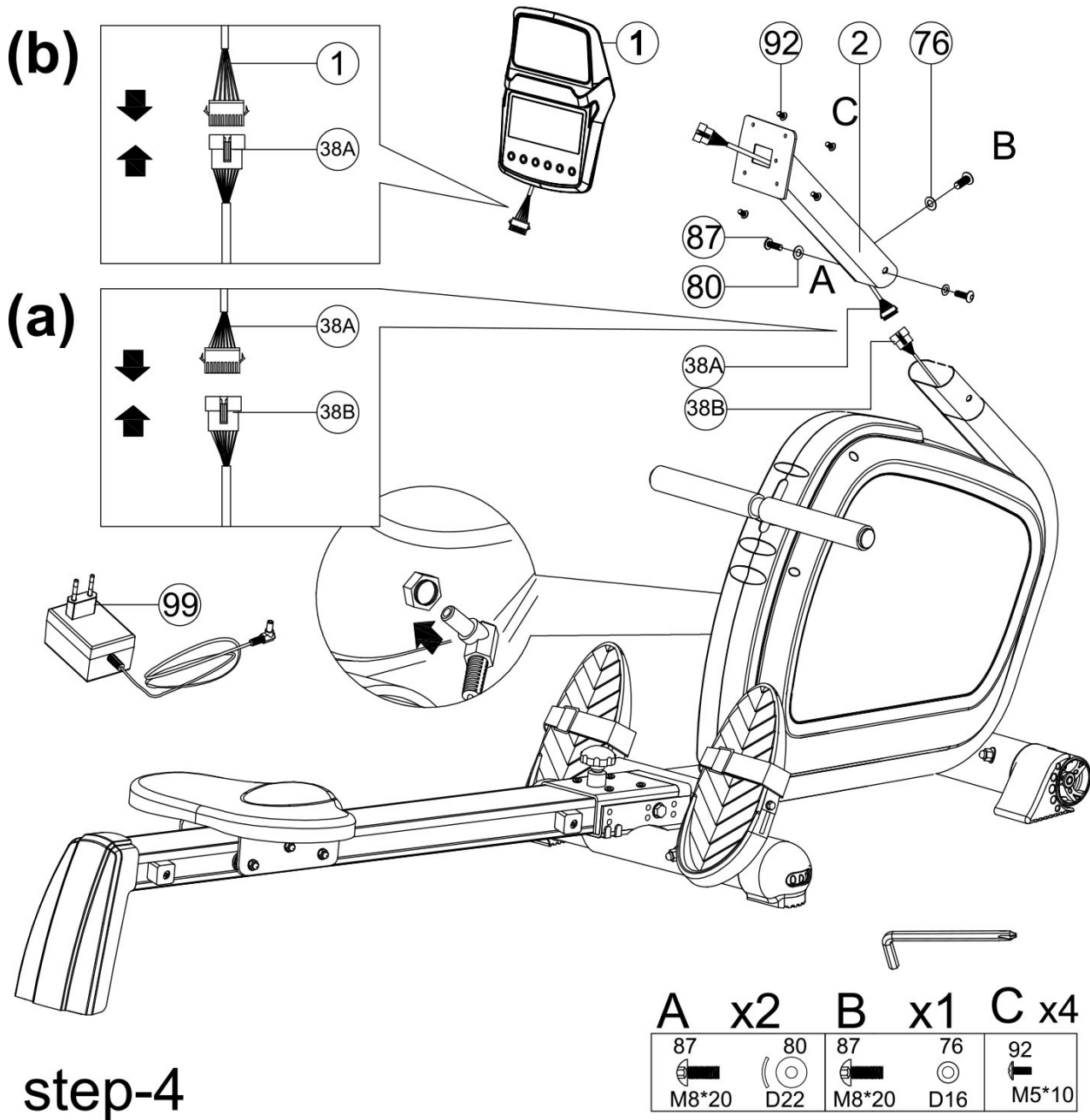
Montageschritt 3:



step-3

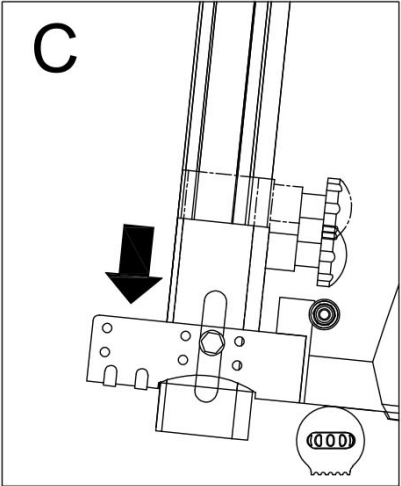
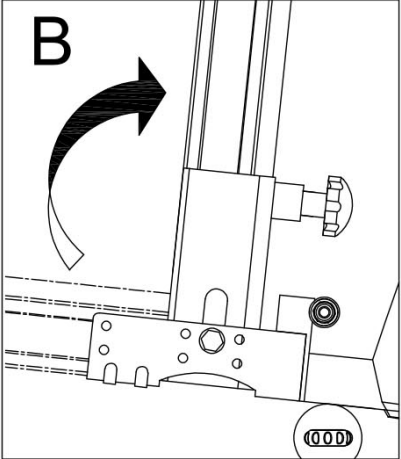
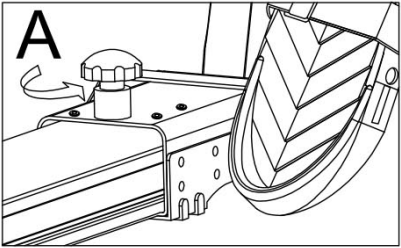
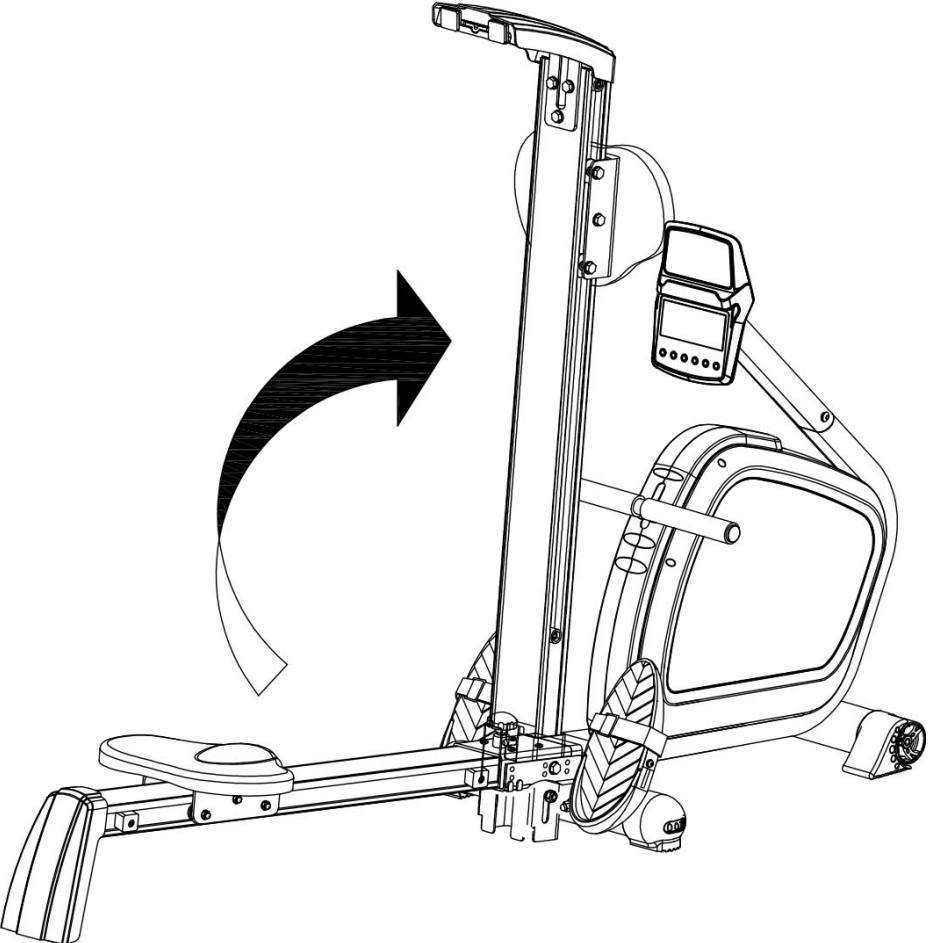
A, Das Fußpedal (10) mit der Achse (16), der Unterlegscheibe (77) und dem Bolzen (91) montieren.

Montageschritt 4:



- 1) Das obere Computerkabel (38A) und das untere Computerkabel (38B), das untere Computerkabel (—) (28) und den Sensor (29), das untere Computerkabel (30) und den Sensor (—) (32) verbinden und die Griffsäule (2) mit einer Unterlegscheibe (76), einer Federscheibe (80) und einer Inbusschraube (87) wie abgebildet auf den Hauptrahmen montieren.
- 2) Das untere Computerkabel (—) (28), das untere Computerkabel (30) und das obere Computerkabel (38A) wie abgebildet mit den am Computer (1) angeschlossenen Kabeln verbinden. Den Computer (1) wie abgebildet mit der Schraube (92) an der Griffsäule (2) montieren.
- 3) Den Adapter montieren und den Computer einschalten.

Klappbares Gerät:





GARLANDO SPA
Via Regione Piemonte, 32 - Zona Industriale D1
15068 - Pozzolo Formigaro (AL) - Italy
www.toorx.it - info@toorx.it