

**TCORX**  
FITNESS IN MOTION

# INSTRUCTION



# BRX60



Rev : 00

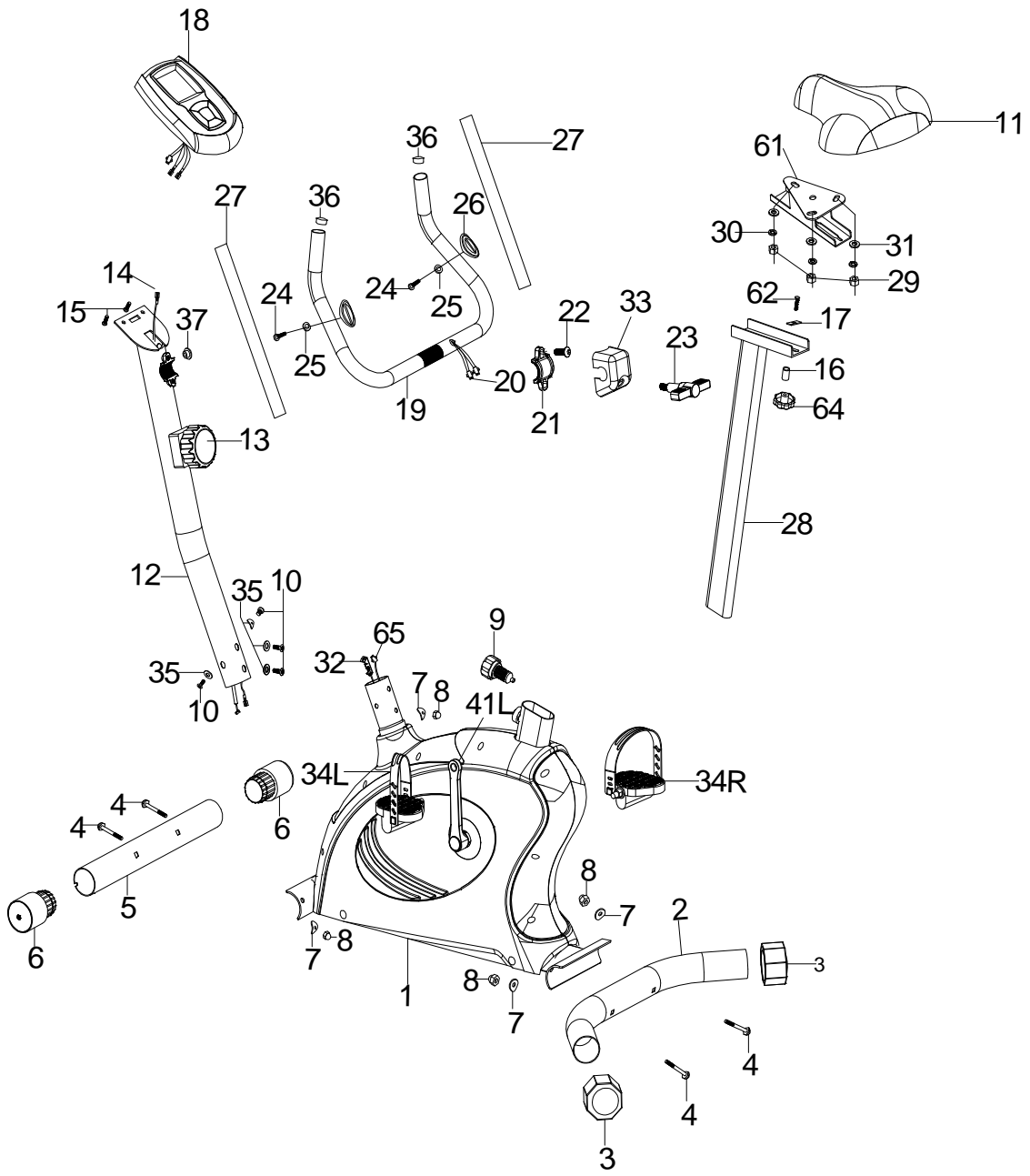
Ed : 02/17

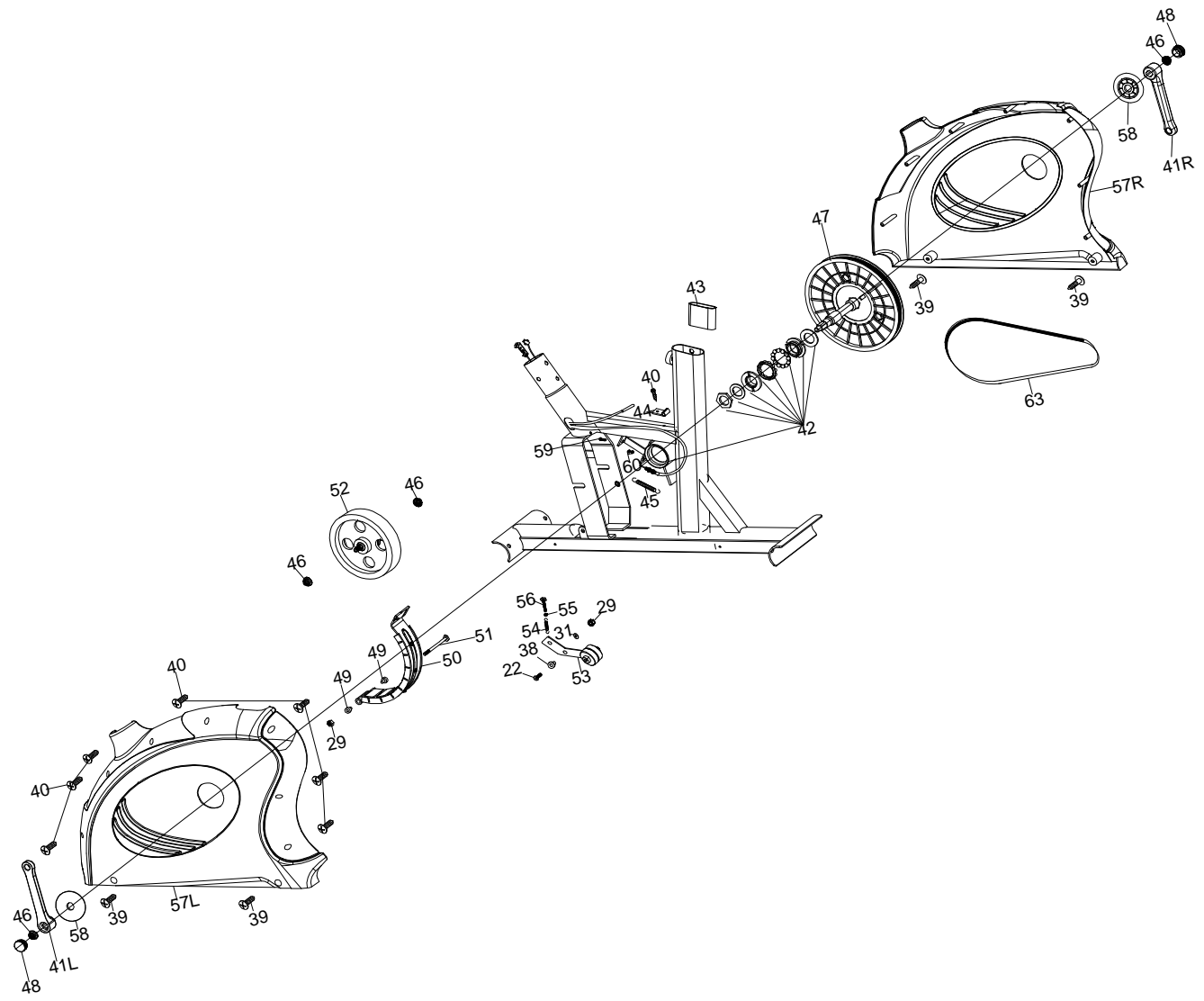


## PARTS LIST

NO.	DESCRIPTION	Q'TY	NO.	DESCRIPTION	Q'TY
1	MAIN FRAME	1	34	PEDAL L/R	1/1
2	REAR STABILIZER	1	35	CURVE WASHER $\Phi 8 \times \Phi 20$	4
3	END CAP FOR REAR STABILIZER	2	36	ROUND END CAPS $\Phi 25.4$	2
4	CARRIAGE BOLT M10*65	4	37	END CAP FOR WIRE	1
5	FRONT STABILIZER	1	38	POWDER SPACER	1
6	END CAP FOR FRONT STABILIZER	2	39	SELF-TAPPING SCREW ST5*15	4
7	CURVE WASHER $\Phi 10 \times \Phi 22$	4	40	SELF-TAPPING SCREW ST5*15	8
8	DOMED NUT M8	4	41	CRANK L/R	1/1
9	QUICK RELEASE KNOB	1	42	BB ASSEMBLY	1
10	ALLEN SCREW M8*16	4	43	SEAT POST PLASTIC SLEEVE	1
11	SEAT	1	44	SENSOR BRACKET	1
12	FRONT POST	1	45	SPRING	1
13	TENSION KNOB +CABLE UPPER	1	46	FRENCH NUT	4
14	SENSOR WIRE MIDDLE	1	47	PULLY	1
15	SCREW M5*10	2	48	END CAP FOR CRANK	2
16	SPACER	1	49	SPACER FOR MAGNET	2
17	SQUARE WASHER	1	50	MAGNETIC ASSEMBLY	1
18	COMPUTER	1	51	HEX HEAD BOLT	1
19	HANDLE BAR	1	52	FLYWHEEL	1
20	HAND PULSE WIRE LOWER	2	53	IDLER PULLEY	1
21	CLAMP	1	54	SPRING	1
22	ALLEN SCREW M8*20	2	55	HEX HEAD NUT M8	1
23	T TYPE KNOB	1	56	HEX HEAD BOLT	1
24	SELF-TAPPING SCREW ST4*20	2	57	CHAIN COVER L/R	1/1
25	FLAT WASHER $\Phi 4.2 \times \Phi 12 \times 1$	2	58	END CAP FOR CHAIN COVER	2
26	HAND PULSE SENSOR	2	59	HEX HEAD BOLT M6*25	1
27	FOAM GRIP FOR HANDLEBAR	2	60	HEX HEAD NUT M6	2
28	SEAT POST	1	61	SLIDING SEAT	1
29	NYLON NUT M8	5	62	CARRIAGE BOLT M8*40	1
30	SPRING WASHER $\Phi 8$	3	63	BELT	1
31	FLAT WASHER $\Phi 8 \times \Phi 17 \times 1.5$	4	64	KNOB	1
32	TENSION CABLE LOWER	1	65	SENSOR WIRE LOWER	1
33	CLAMP COVER	1			

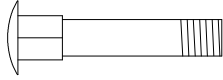


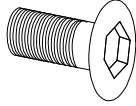
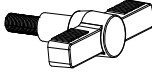



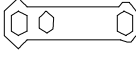
# EXPLODED DIAGRAM





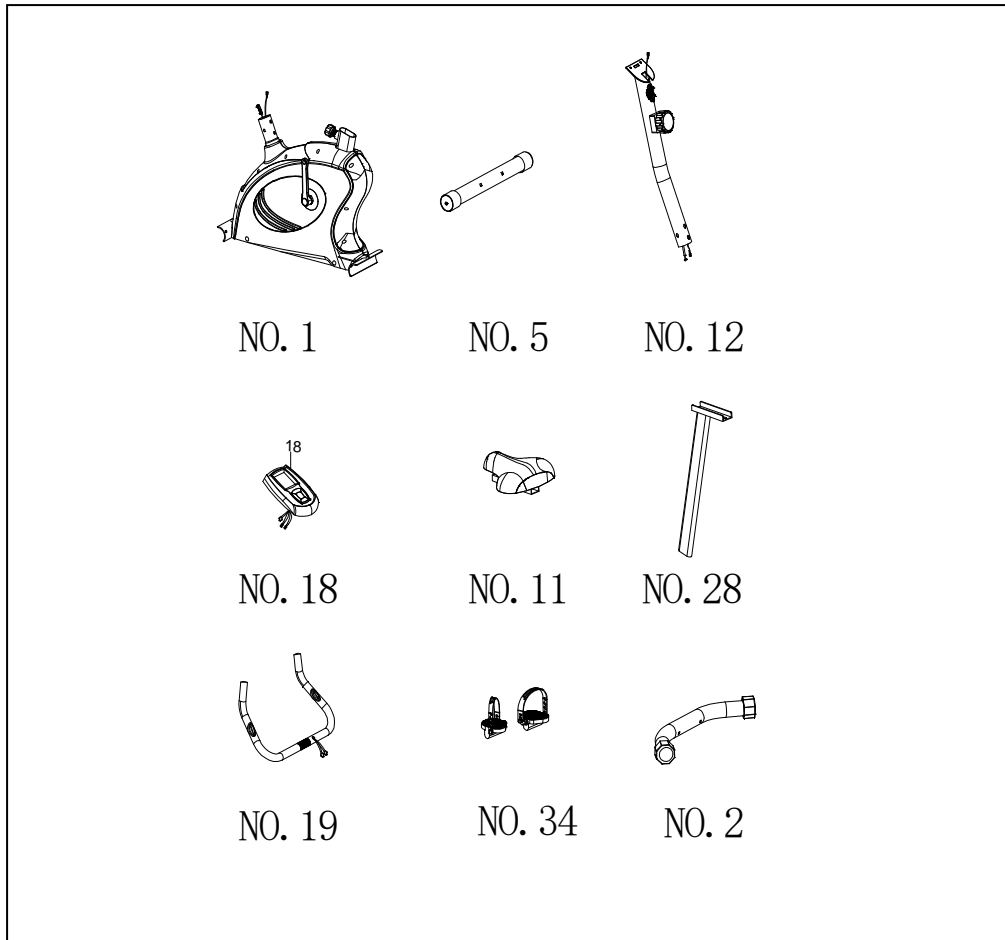


## HARDWARE PARTS LIST

No.	Description	Drawing	Q'ty
4	Carriage Bolt M10*65		4
7	Curve Washer $\Phi 10 * \Phi 22$		4
8	Domed Nut M10		4
10	Allen Bolt M8*16		4
23	T type Knob		1
33	Clamp cover		1
35	Curve Washer $\Phi 8 * \Phi 20$		4
	Allen Key 6mm		1
	Box Wrench		1

**Above described parts are all the parts you need to assemble this machine. Before you start to assemble, please check the hardware packing to make sure they are included.**

## PRE-ASSEMBLY CHECK LIST

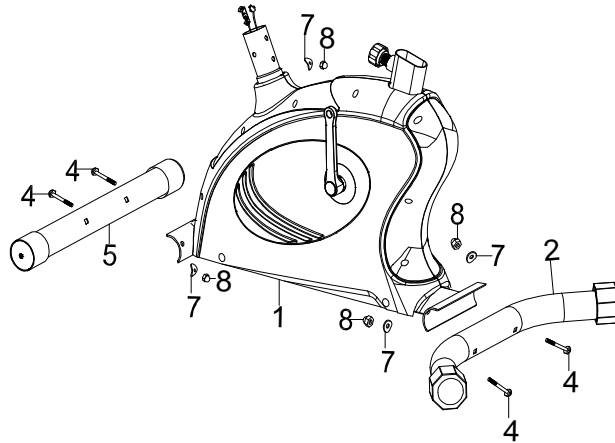


PART NO.	DESCRIPTION	Q'TY
1	Main Frame	1
2	Rear Stabilizer	1
5	Front Stabilizer	1
11	Seat	1
12	Front Post	1
18	Computer	1
19	Handlebar	1
28	Seat Post	1
34	Left & Right Pedal	1/1
	User Manual	1
	Hardware bag	1

# ASSEMBLY INSTRUCTION

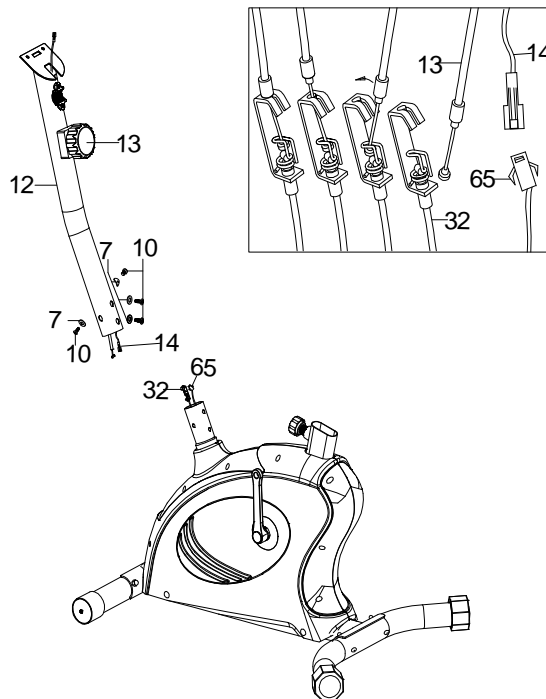
## STEP 1

- (a) Attach front stabilizer (5) to main frame (1), tighten with 2 sets of carriage bolt (4), curve washer (7) and domed nut (8).
- (b) Then, attach rear stabilizer (2) to main frame (1), tighten with 2 sets of carriage bolt (4), curve washer (7) and domed nut (8).



## STEP 2

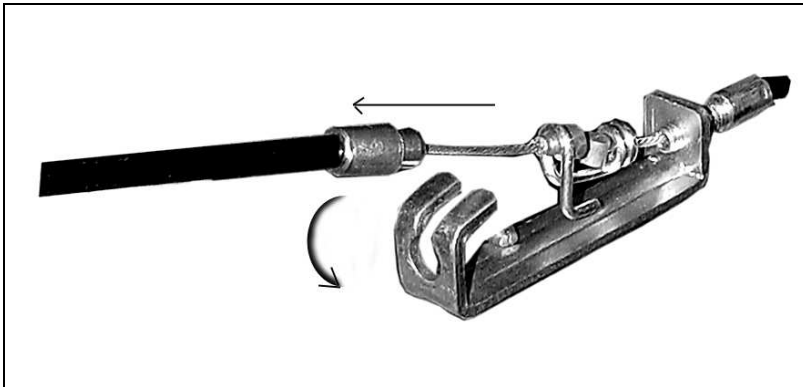
- (a) Take front post (12) and connect middle sensor wire (14) with lower sensor wire (65).
- (b) Adjust the tension control knob (13) to level 8, then connect it with the lower tension cable (32). Insert front post (12) into main frame (1) and tighten with 4 sets of allen screw (10) and curve washer (7).



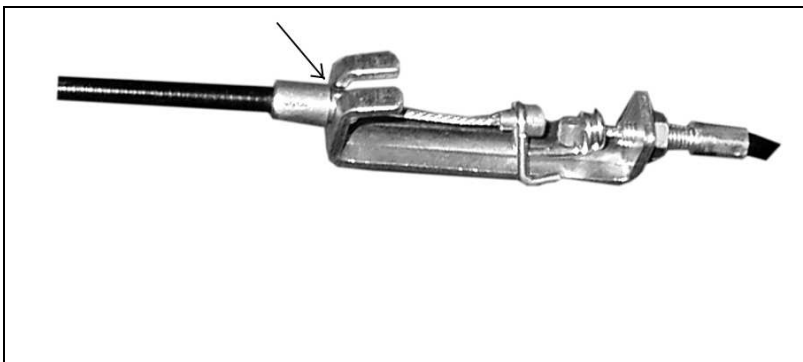
# HOW TO CONNECT TENSION CONNECTOR



Slide the Cable wire from the Upper Tension Connector in between the opening on the wire holder on the Lower Tension Connector.



Pull the Upper Tension Connector backward and slide the wire through the slot on the bracket.

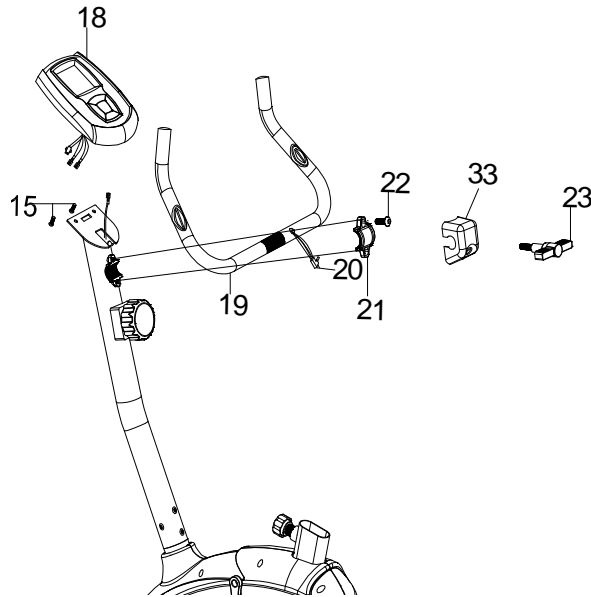


Drop down the Connector so the fitting sits firmly on top of the bracket.

**NOTE:** In able to hold the Front Post while connecting the cables and wires, extra help may be needed.

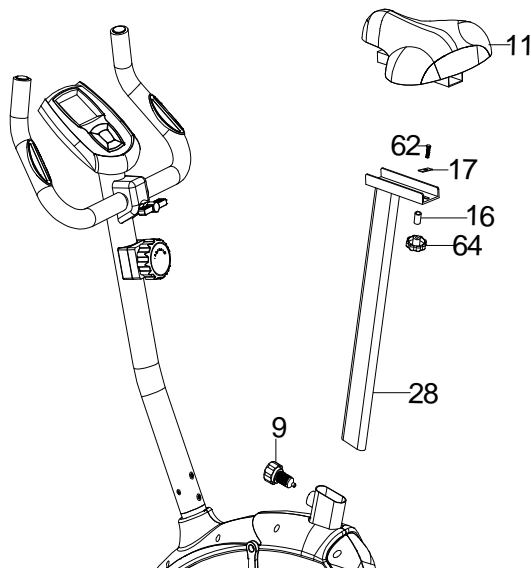
### STEP 3

- (a) Remove the clamp (21) and allen screw (22) from the front post . Attach handlebar (19) to front post, Secure by using the clamp (21), allen screw (22), clamp cover (33) and T type knob (23).
- (b) Insert the hand pulse wires (20) through end cap for wire (37) and insert through the hole in the front post, pull the hand pulse wires (20) through the hole at the top of the front post and insert end cap for wire(37) into the front post.
- (c) Connect the hand pulse wires (20) and middle sensor wire (14) to the back of the computer (18) . Attach the computer onto the bracket of front post. Secure by using two screws (15) which are pre-assembled on the back of computer.



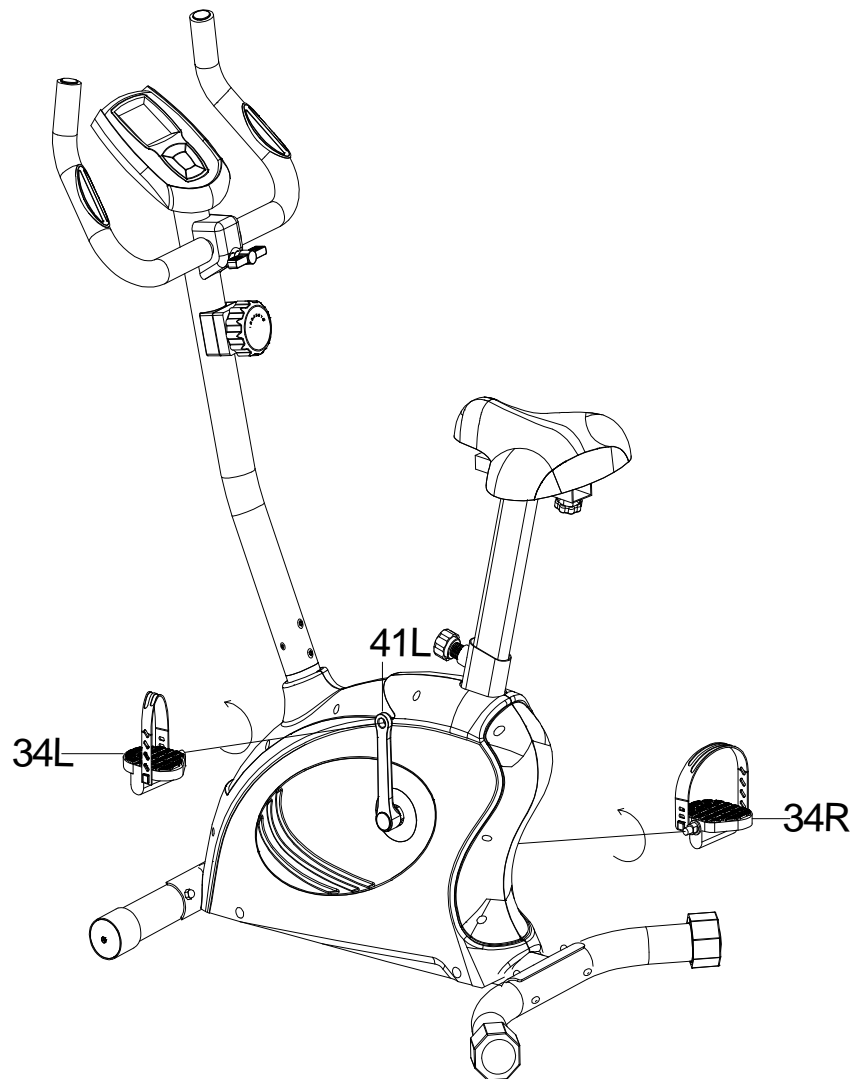
### STEP 4

- Take the Quick release knob (9) off from main frame . Insert seat post (28) into the main Frame (1), then tighten with knob (9).
- Attach seat (11) to seat post, tighten with carriage bolt (62), square washer(17),spacer (16) and knob (64).



## STEP 5

The left pedal (34L) and right pedal (34R) which are marked "L" and "R". Connect them to their appropriate crank arm (41). The right pedal is on the right hand side of the cycle as you sit on it. Note that the right pedal should be threaded on clockwise and the left pedal on counter-clockwise.



**CHECK ALL BOLTS AND NUTS ARE TIGHTENED  
BEFORE USING THE MACHINE**

# COMPUTER INSTRUCTIONS



**The monitor can only be power on with using the AA batteries.**

## **FUNCTION BUTTONS**

### **MODE**

1. Press the button to select TIME, DISTANCE and CALORIES to preset.
2. Press the button for selection function display value on LCD, or enter after setting.
3. Press the button and hold for 2 seconds to reset all value except Odometer to be zero.  
(When the user replace batteries, all the values will reset to ZERO automatically.)

### **SET**

1. To set up the target value of TIME, DISTANCE and CALORIES.
2. Press the button and hold for 2 seconds to speed up the increment.

### **RESET**

1. Press the button to reset function value when setting.
2. Press the button and hold for 2 seconds to reset all value except Odometer to be zero.  
(When the user replace batteries, all the values will reset to ZERO automatically.)

## **FUNCTIONS & OPERATIONS**

### **Time**

Accumulates total time from 00:00 up to 99:59. The user may preset target time by pressing SET & MODE button. Each increment is 1 minute.  
Automatically count down from targeting value during exercise.

### **Calories**

Accumulates calories consumption during training from 0 to max. 9999 calories. The user may also preset the target calorie before training by press SET & MODE button. Each setting increase is 1 cal till 1000, Each increment will be 10 cal when calories is over 1000. Automatically count down from targeting value during exercise.

**Note : This data is a rough guide which can not be used in medical treatment**

**Odometer**

Display the total accumulated distance from 0.0 to 999.9. User also can press mode key to display the Odometer value.

**Pulse**

The monitor will display the user's heart rate in beats per minute during training.

**Speed**

Displays your workout speed value in Kilometer per hour.

**Distance**

Displays the accumulative distance traveled during each workout up to a maximum of 99.9 MILE.

**Note:**

1. If the computer displays abnormally, please re-install the battery and try again.
2. Please install 2 pcs of AA 1.5V batteries in the battery case on the back of monitor. (Whenever batteries are removed, all of the functions values will be reset to zero.)
3. The batteries must be removed from the appliance before it is scrapped and that they are disposed of safely.
4. While the user starts to do exercise, the display will show out the workout value automatically. Once stop exercise over 4 minutes, the display will turn off. But the workout value of odometer will be hold. While user starts exercise again, workout value of odometer will be accumulated continuously.
5. After the monitor is power on or press MODE key, the LCD will display all functions values from Time – Calories – Odometer – Pulse – Speed – Distance. Each value will be held for 6 seconds.





GARLANDO SPA  
Via Regione Piemonte, 32 - Zona Industriale D1  
15068 - Pozzolo Formigaro (AL) - Italy  
[www.toorx.it](http://www.toorx.it) - [info@toorx.it](mailto:info@toorx.it)