

**TOORX**  
FITNESS IN MOTION

# INSTRUCTION



**BRX75**  
**EASY**



Cod : GRLDTOORXBRX75E

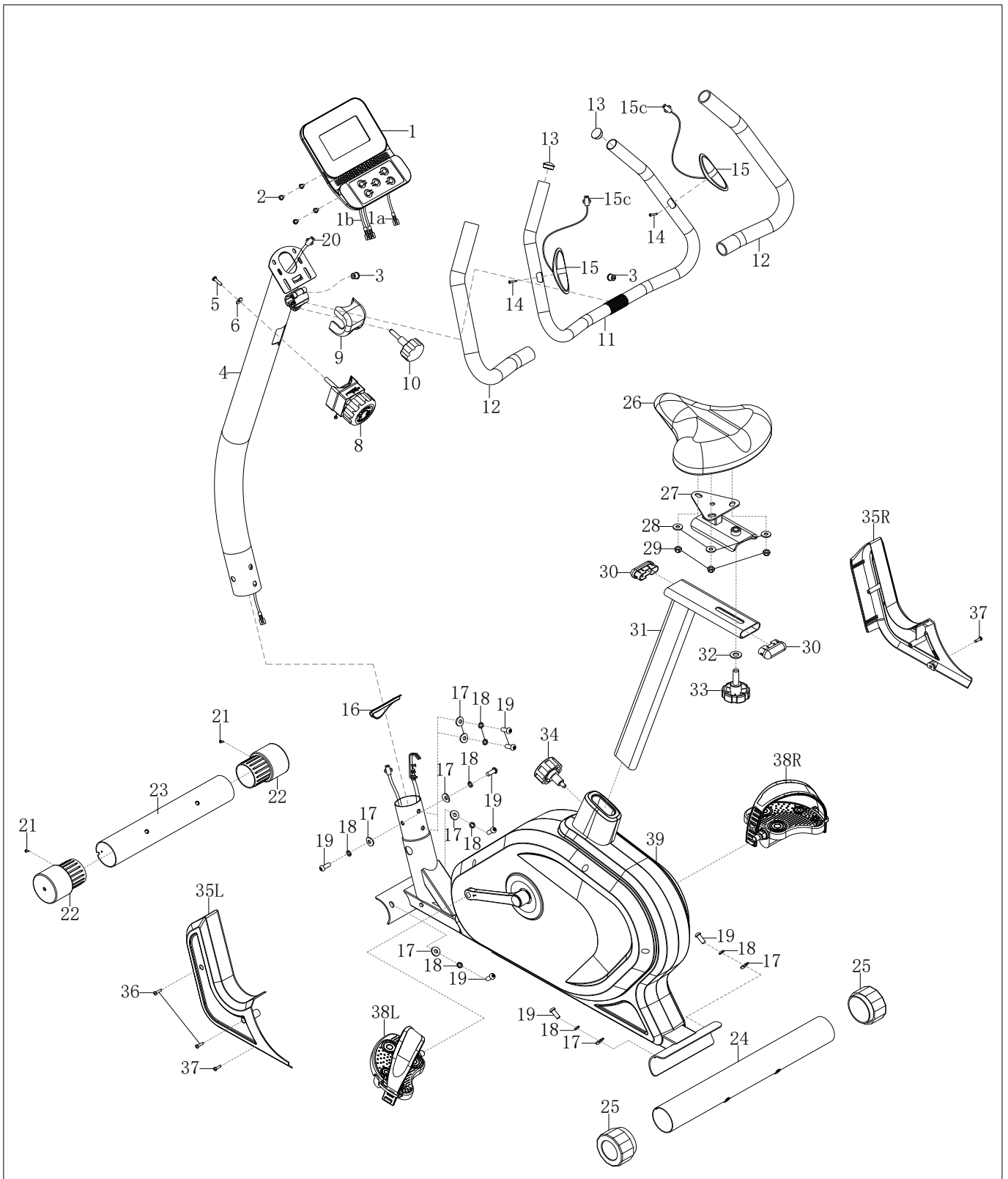
Rev : 00

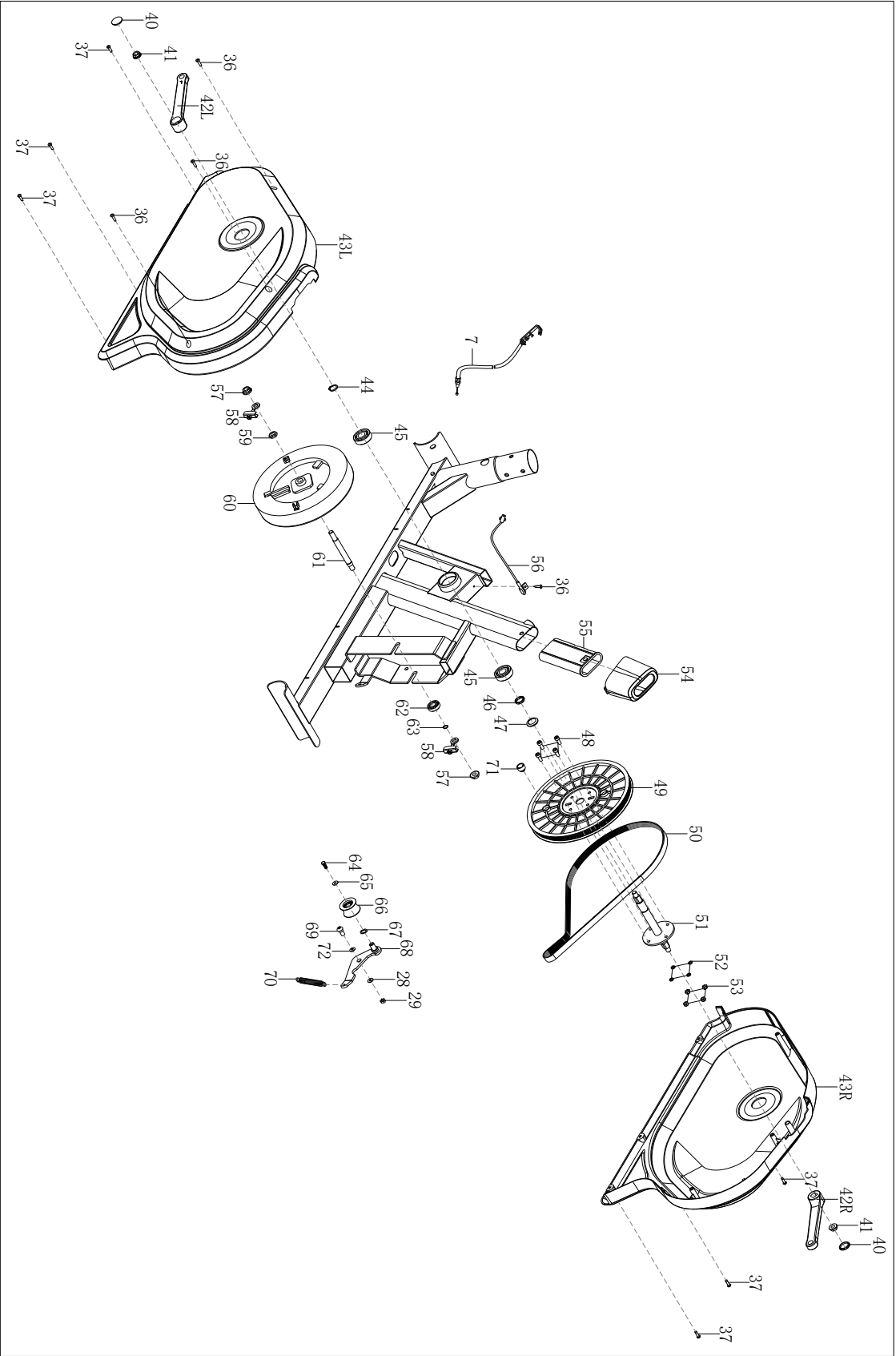
08/24

Ed :



# EXPLODED DIAGRAM





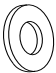
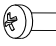
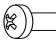

## Parts List

No.	Description	Qty
1	Computer	1
2	Bolt M5*10*φ10	4
3	End cap	2
4	Postbar	1
5	Bolt M5*20*φ10	1
6	Arc washer d5*φ16*1.5*R30	1
7	Tension wire	1
8	Tension knob	1
9	Cover	1
10	Knob	1
11	Middle handlebar	1
12	Foam grip	2
13	Round cap φ25	2
14	Screw ST4.0*19*φ11	2
15	Handle pulse sensor	2
16	Ring	1
17	Arc washer d8*φ20*2.0*R30	8
18	Spring washer d8	8
19	Bolt M8*20*S5	8
20	Trunk wire 1	1
21	Screw ST3*10*φ5.6	2
22	End cap	2
23	Front stabilizer	1
24	Rear stabilizer	1
25	End cap	2

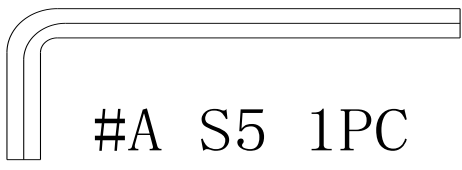
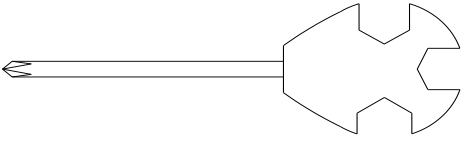
No.	Description	Qty
26	Seat	1
27	Seat holder	1
28	Washer d8*φ20*2	4
29	Nylon nut M8*H7.5*S13	4
30	End cap	2
31	Seat tube	1
32	Washer d12*φ24*2	1
33	Nut knob M12	1
34	Knob M16*1.5*22*φ56	1
35L/R	Cover	2
36	Screw ST4.2*16*φ8	6
37	Screw ST4.2*16*φ8	8
38 L/R	Pedal	2
39	Main frame	1
40	Crank cover	2
41	Nut M10*1.25*H7.5*S14	2
42 L/R	Crank	2
43 L/R	Chain cover	2
44	Washer D17*1.0	1
45	Bearing 6203	2
46	Spacer φ22*φ18*4	1
47	Wave washer d17*φ22*0.3	1
48	Bolt M6*15*S5	4
49	Belt plate	1
50	Belt	1

51	Shaft	1		64	Bolt M6*10*S10	1
52	Spring washer d6	4		65	Washer d6*Φ13*1.5	1
53	Nylon nut M6*H6*S10	4		66	Idler	1
54	Seat cover	1		67	Wave washer d12*Φ15.5*0.3	1
55	Bushing	1		68	Idler rod	1
56	Sensor	1		69	Bolt M8*12*Φ10*5.5*S5	1
57	Nut M10*1*H8*S15	2		70	Tension spring	1
58	Chain bolt	2		71	Round magnet	1
59	Nut M10*1*H5*S17	1		72	Washer d12*Φ17*0.5	1
60	Flywheel	1				
61	Axle	1				
62	Bearing 6001	1		A	Spanner S5	1
63	Washer D12*1.0	1		B	Wrench S13-14-15	1

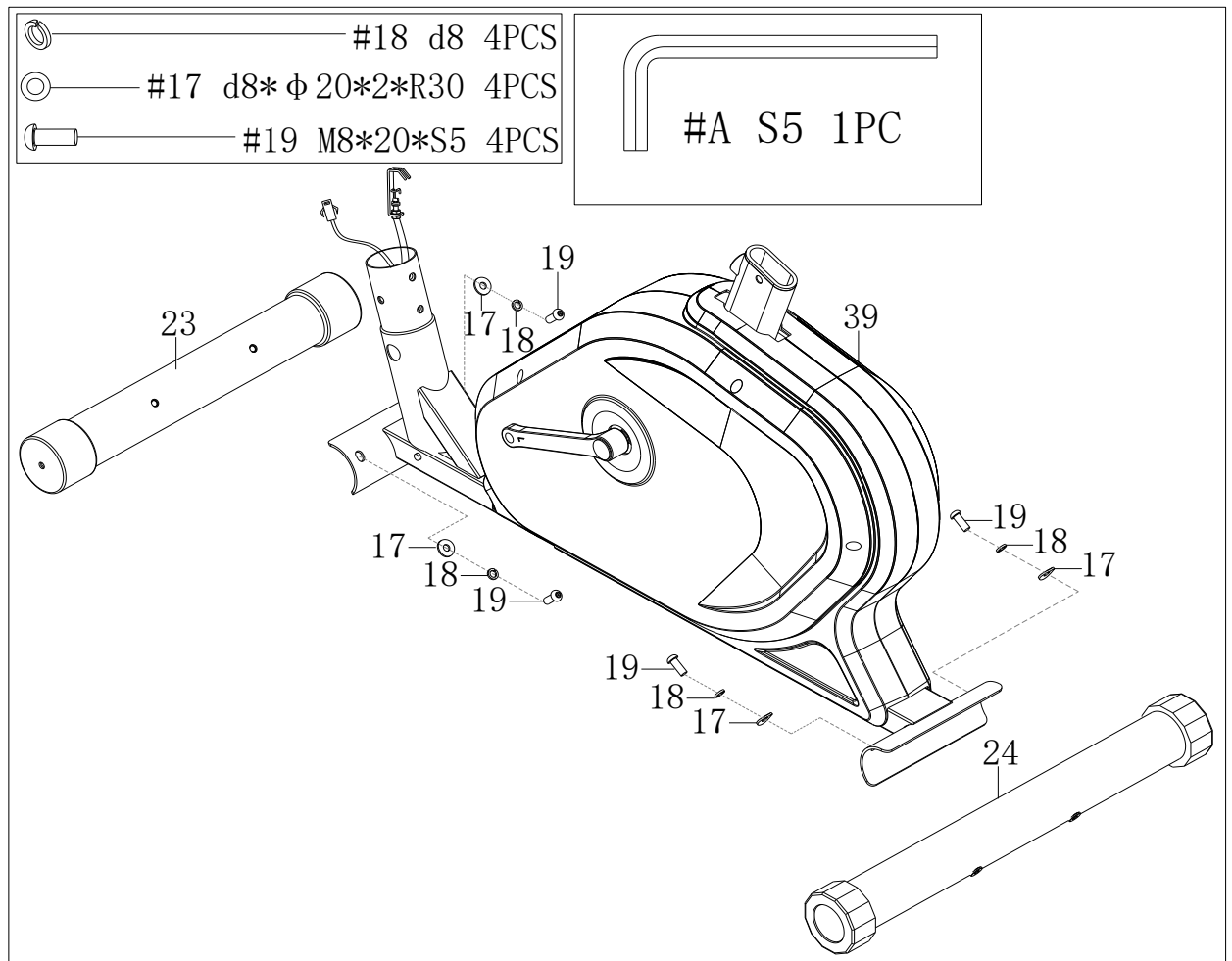
### Hardware:

	—————	#32	d12*Φ24*2	1PC
	—————	#36	ST4. 2*16*Φ8	2PCS
	—————	#37	ST4. 2*16*Φ8	2PCS
	—————	#33	M12	1PC

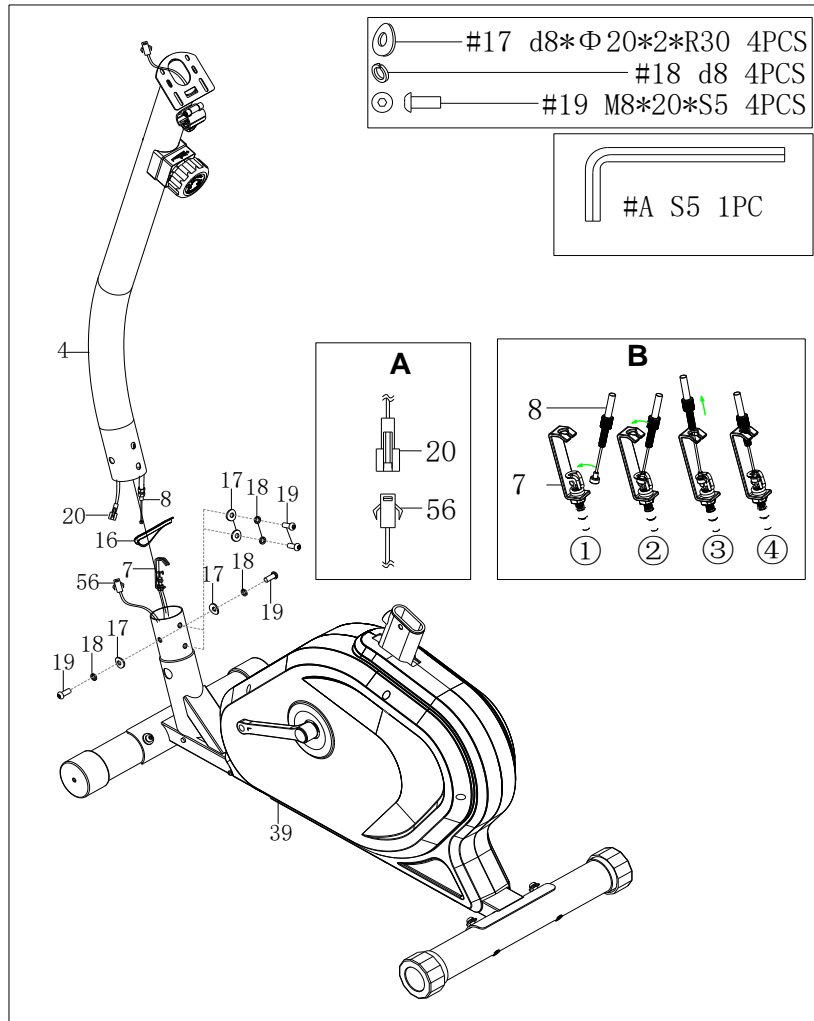
	#A S5 1PC
	#B S13-14-15 1PC

## Step 1:



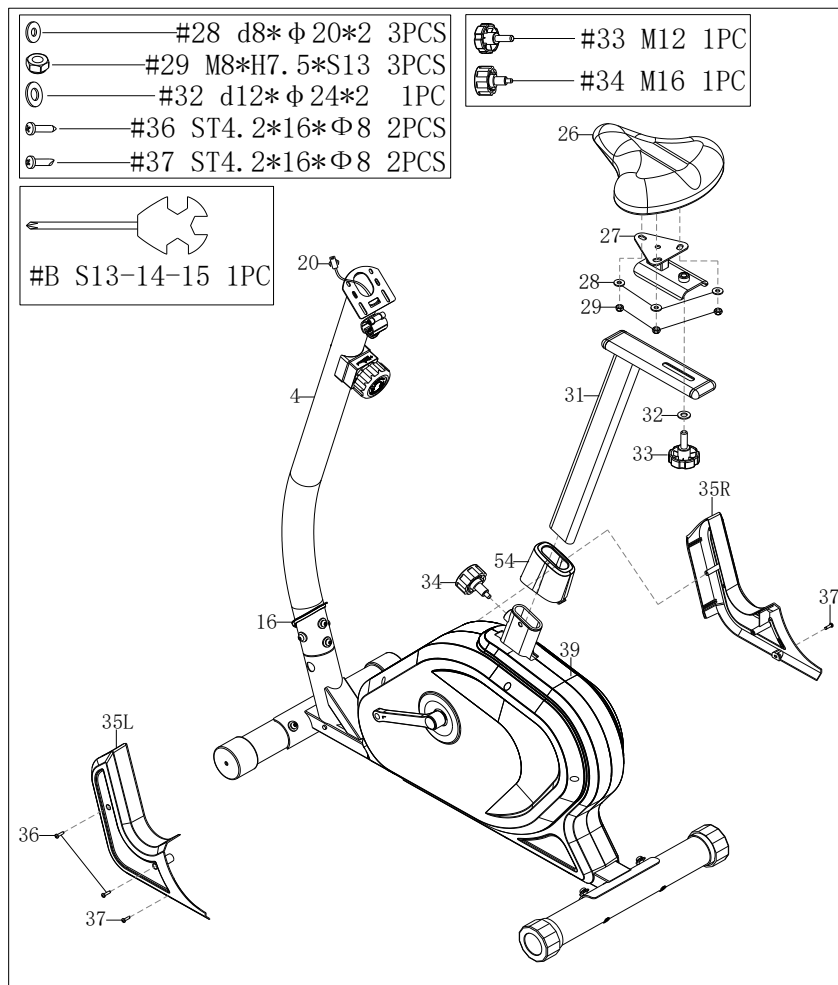
- Remove bolts(19), spring washers(18) and arc washers(17) from front and rear stabilizers(23+24) by spanner(A).
- Secure front and rear stabilizers(23+24) to main frames(39) with bolts(19), spring washers(18) and arc washers(17) by spanner(A).

## Step 2:



- Insert ring(16) into postbar(4).
- Connect trunk wire 1(20) with sensor wire(56) as shown picture A, then connect the wire of tension knob(8) with tension wire(7) as show picture B.
- Remove bolts(19), spring washers(18) and arc washers(17) from main frame(39) by spanner(A).
- Secure postbar(4) to main frame(39) with bolts(19), spring washers(18) and arc washers(17) by spanner(A).

## Step 3:



a. Put cover(35L/R) on the main frame(39), then secure them with screws(36+37) by wrench(B) in position.

b. Put cover(54) on the main frame(39), then insert seat tube(31) in the main frame(39), then adjust the suitable height and secure with knob(34).

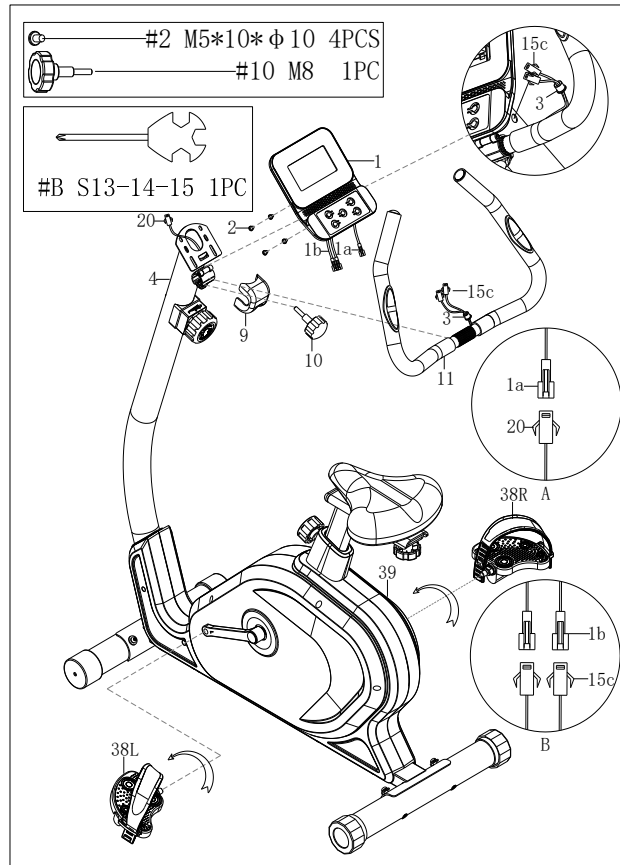
c. Secure seat holder(27) with seat tube(31) with knob(33) and washer(32).

d. Remove washers(28) and nuts(29) from seat(26) by wrench(B).

e. Secure seat(26) in seat holder(27) with washers(28) and nuts(29) by wrench(B).



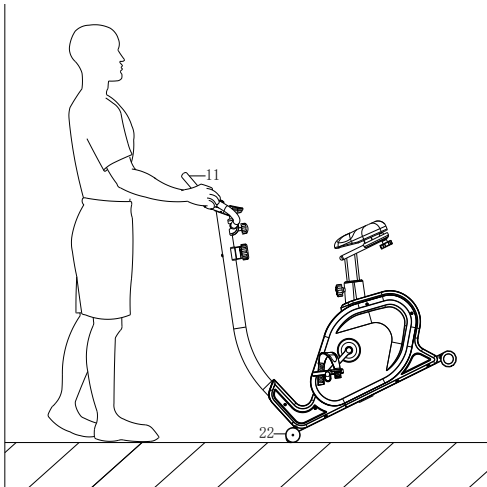
## Step 4:



- a. Remove knob(10) from postbar(4), then put the handlebar(11) in the postbar(4), then put the cover(9), finally secure handlebar(11) with the postbar(4) with knob(10).
- b. Pass pulse wire(15C) through the hole of postbar(4), then put the cover(3) on the hole of postbar(4).
- c. Remove bolts(2) from computer(1) by wrench(B).
- d. Connect computer wire(1a) and trunk wire 1(20) well, connect computer wire(1b) and pulse wire(15c).
- e. Secure computer(1) on the postbar(4) with bolts(2) by wrench(B).
- f. fix handlebar(8) on postbar(21) with bolts(13), spring washer (14) and washer(4).
- d. Secure pedal(38L/R) to crank by wrench(B).

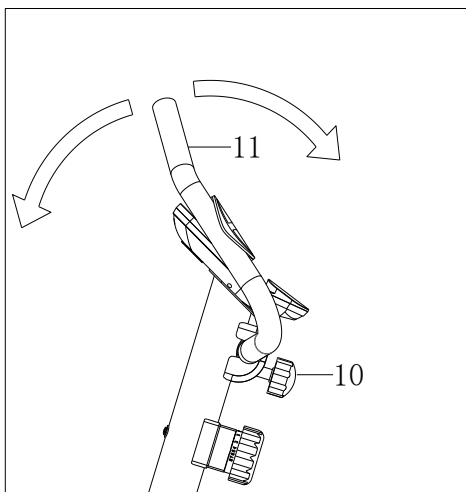
# ADJUSTMENTS GUIDE

## 1. MOVING THE MACHINE



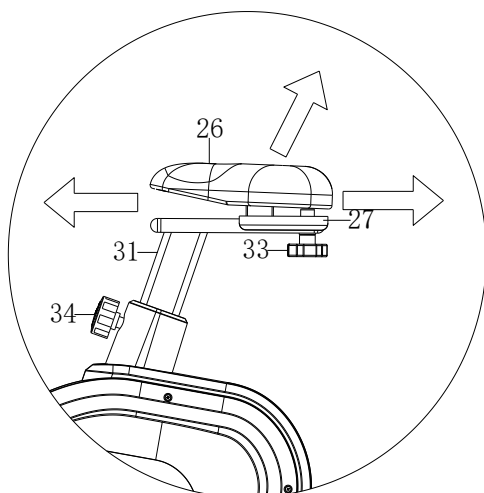
To move the machine, push the handlebar(11) until the end cap of transportation wheels(22) on the front stabilizer touch the ground. With the wheels on the ground, you can transport the bike to the desired location with ease.

## 2. ADJUSTING THE HANDLEBAR



Unlock the Knob(10), then adjust the angle of Handlebar(11) to a available position according to the left instruction picture.

## 3. ADJUSTING THE SADDLE

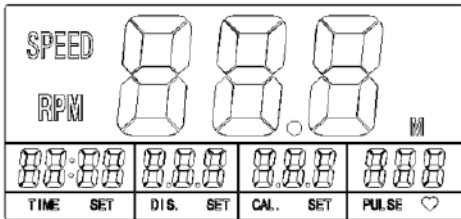


Rotate knob(34) counter-clockwise to adjust the height according as holes on saddle tube(31). Rotate knob (33) counter-clockwise to adjust the distance horizontal according as the arrows on saddle plate (27);

## EXERCISE MONITOR INSTRUCTION

### DISPLAY INFORMATION

- 1) Main display area: SPEED/RPM;
- 2) TIME, DISTANCE, CALORIE, PULSE display area;

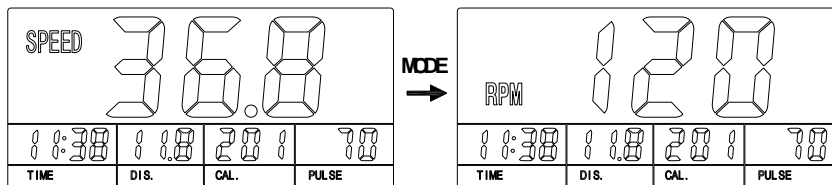


### KEY FUNCTION

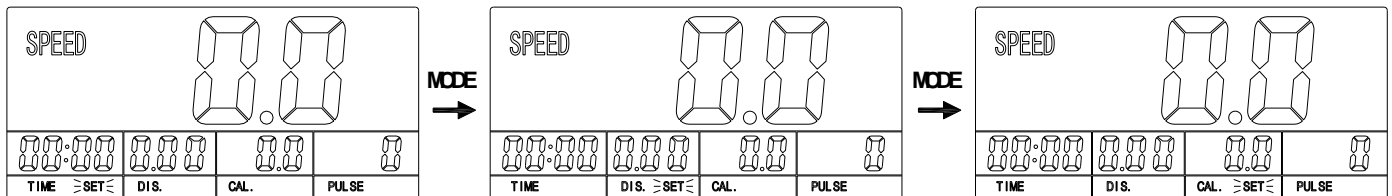
MODE	<ul style="list-style-type: none"> <li>. START Status: Changeover display SPEED or RPM;</li> <li>. STOP Status: Enter the setting mode ,and choose set items needs to be set</li> <li>. Pressing and hold with 3 seconds to reset all of the value to 0 ;</li> </ul>
SET	. In setting mode, adjusted the value of TIME、DISTANCE、CALORIE;
RESET	<ul style="list-style-type: none"> <li>. In setting mode, the value clear to 0;</li> <li>. Pressing and hold with 3 seconds to reset all of the value to 0 ;</li> </ul>

### INSTRUCTION:

1. Motion Status:



2. Stop Status:



- 1) Press MODE key to choose setting items with relevant flashing for TIME,DISTANCE,CALORIE;
- 2) Press SET key to adjusted;
- 3) If any of these are setting, The corresponding value will be inverted in motion status。When any of setting value count to 0, the motion will be “DI DI” Voice Prompt;

3. AUTO ON/OFF

- The system dormant state automatically when the sensor has no signal input for approximately 5 minutes.
- The system turns on when the signal input from the sensor or keystrokes, in the system dormant state mode.

### SPECIFICATION

TIME.	. 0M:00S ~ 99M:00S
SPEED	. 0.0 ~ 99.9KM/H
DISTANCE	. 0.00 ~ 99.9KM
CALORIES	. 0.0~ 999KCAL
PULSE	. 40-240BPM
RPM	. 0 ~ 199RPM
Battery Type	Size-AAA or UM-4



GARLANDO SPA  
Via Regione Piemonte, 32 - Zona Industriale D1  
15068 - Pozzolo Formigaro (AL) - Italy  
[www.toorx.it](http://www.toorx.it) - [info@toorx.it](mailto:info@toorx.it)