

TOORX
FITNESS IN MOTION

INSTRUCTION



iConsole App Manual

DOWNLOAD 

www.toorx.it/iconsole

BRX100 ERGO



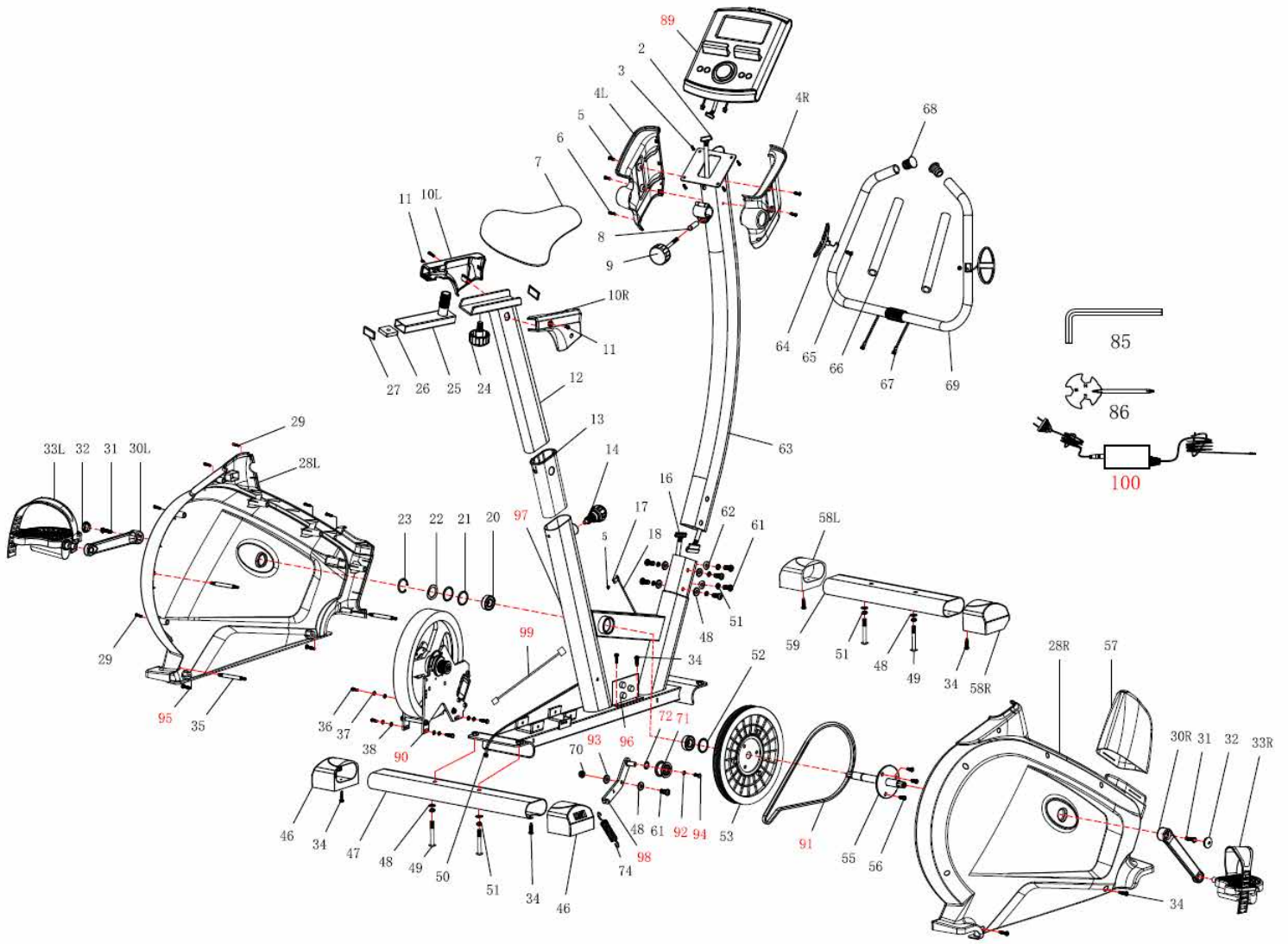
Cod : GRLDTOORXBRX100E

Rev : 00

Ed : 09/19



EXPLODED DRAWING



PART LIST

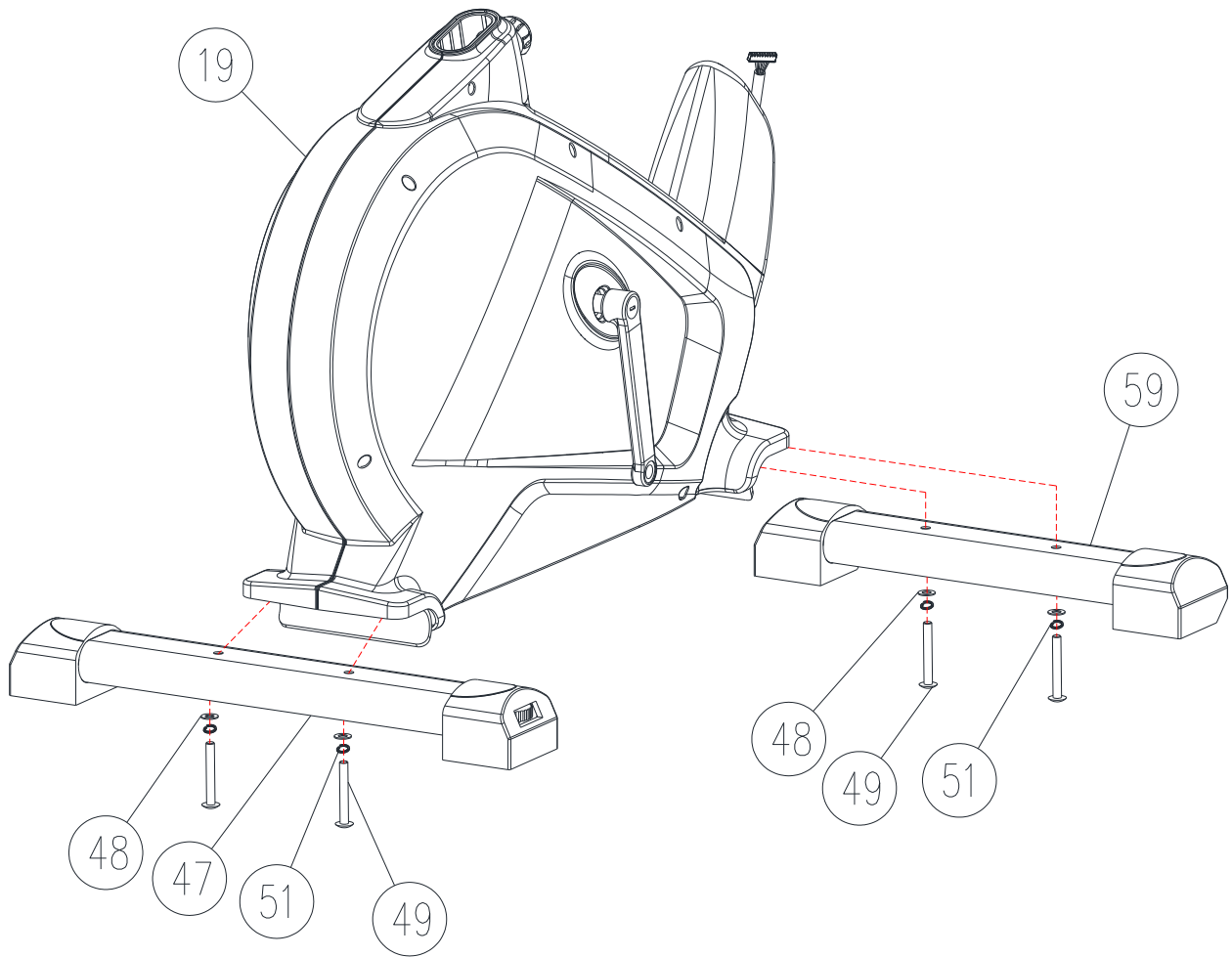
Part #	Description	Quantity
2	Upper computer cable	1
3	Screw	4
4L	Computer plastic cover (Left)	1
4R	Computer plastic cover (Right)	1
5	Screw	8
6	Self-tapping screw	2
7	Saddle	1
8	Tube spacer	1
9	Round-shaped Knob	1
10R	Seat post plastic cover (Left)	1
10L	Seat post plastic cover (Right)	1
11	Screw	2
12	Seat post	1
13	Tube bundle	1
14	Round head grooved pin	1
16	Lower computer cable	1
17	Sensor set	1
18	Sensor	1
20	Bearing	3
21	Washer	1
22	Waved washer	1
23	C shape washer	1
24	Round head grooved pin	1
25	Slide tube	1
26	Nut	1
27	Tube end cap	2
28L	Chain cover (Left)	1
28R	Chain cover (Right)	1
29	Self-tapping screw	6
30L	Crank (Left)	1

Part #	Description	Quantity
30R	Crank (Right)	1
31	Anti-loose hex head bolt	2
32	Crank end cap	2
33L	Pedal (Left)	1
33R	Pedal (Right)	1
34	Screw	8
35	Joint lever	3
36	Hex screw	2
37	Spring washer	2
38	Washer	2
46	Rear end cap	2
47	Rear Stabilizer	1
48	Flat washer	10
49	Allen bolt	4
50	DC line	1
51	Spring washer	10
52	Washer	1
53	Belt wheel	1
55	Pedal Axle	1
56	Allen head screw	3
57	Upper protective cover	1
58L	Front end cap Left	1
58R	Front end cap Right	1
59	Front Stabilizer	1
61	Allen bolt	7
62	Curved washer	2
63	Handlebar post	1
64	Hand pulse pads	2
65	Self-tapping screw	2
66	Handlebar foam	2
67	Hand pulse cable	2
68	End cap	2
69	Handlebar	1

Part #	Description	Quantity
70	Nut	2
71	Idler	1
72	Waved washer	1
74	Spring	1
85	Allen key wrench	1
86	Combination wrench	1
89	Computer SE1010	1
90	EMS flywheel	1
91	Belt 400J6	1
92	Flat washer 1T×Φ6.5×Φ13mm	1
93	Flat washer 1T×Φ8.5×Φ20mm	1
94	Screw M6×12mm	1
95	Screw M5×20mm	4
96	Control board	1
97	Main frame	1
98	Idler wheel pole	1
99	Computer cable	1
100	Adaptor	1

ASSEMBLY INSTRUCTION

STEP 1

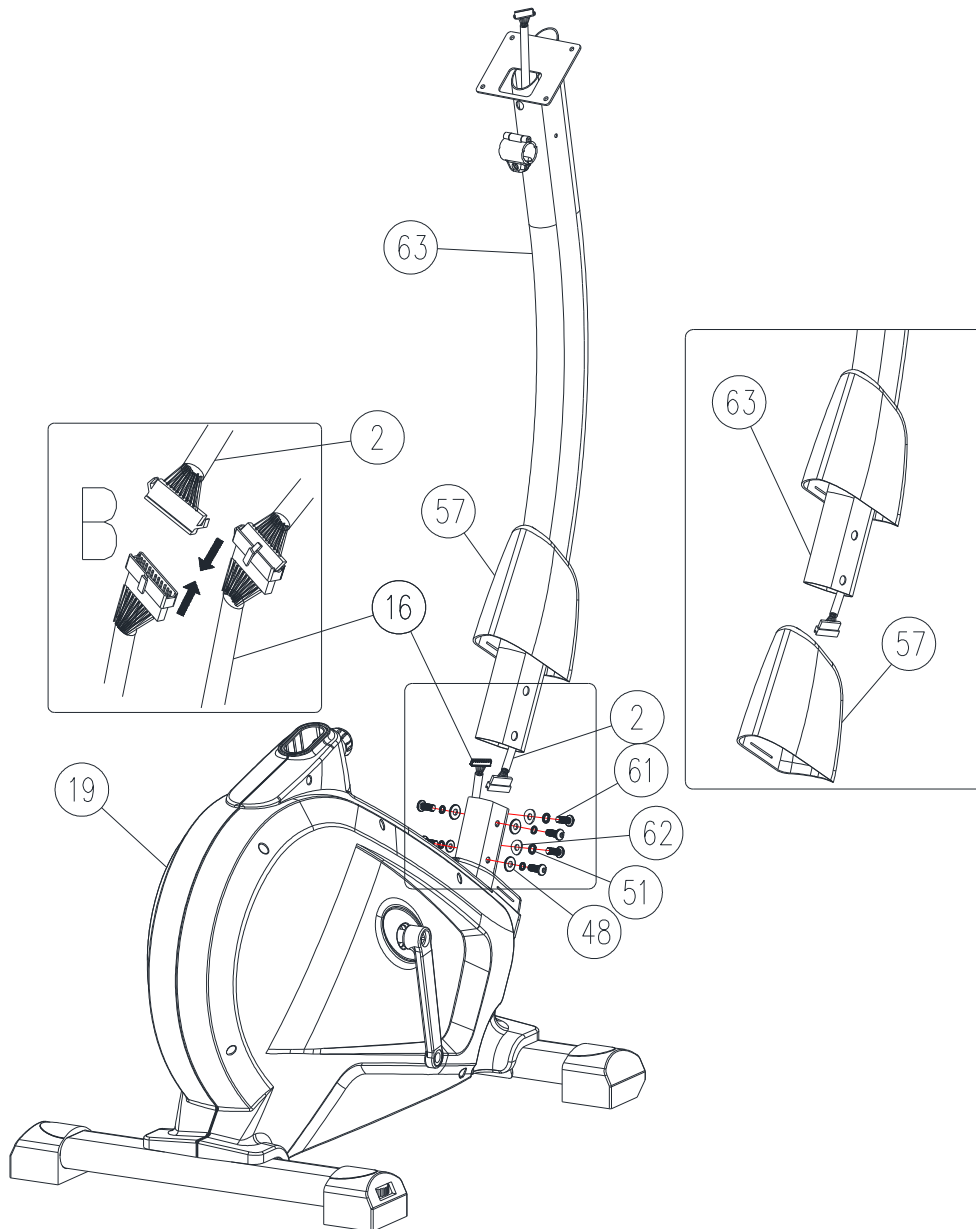


Attach the Front Stabilizer (59) onto the Main Frame (19) with Flat washer (48), Spring washer (51) and M8 Allen bolt (49). Tighten fully.

Attach the Rear Stabilizer (47) onto the Main Frame (19) with Flat washer (48), Spring washer (51) and M8 Allen bolt (49). Tighten fully.

Note: You can adjust the Rear End Cap to keep the Magnetic Bike stable.

STEP 2

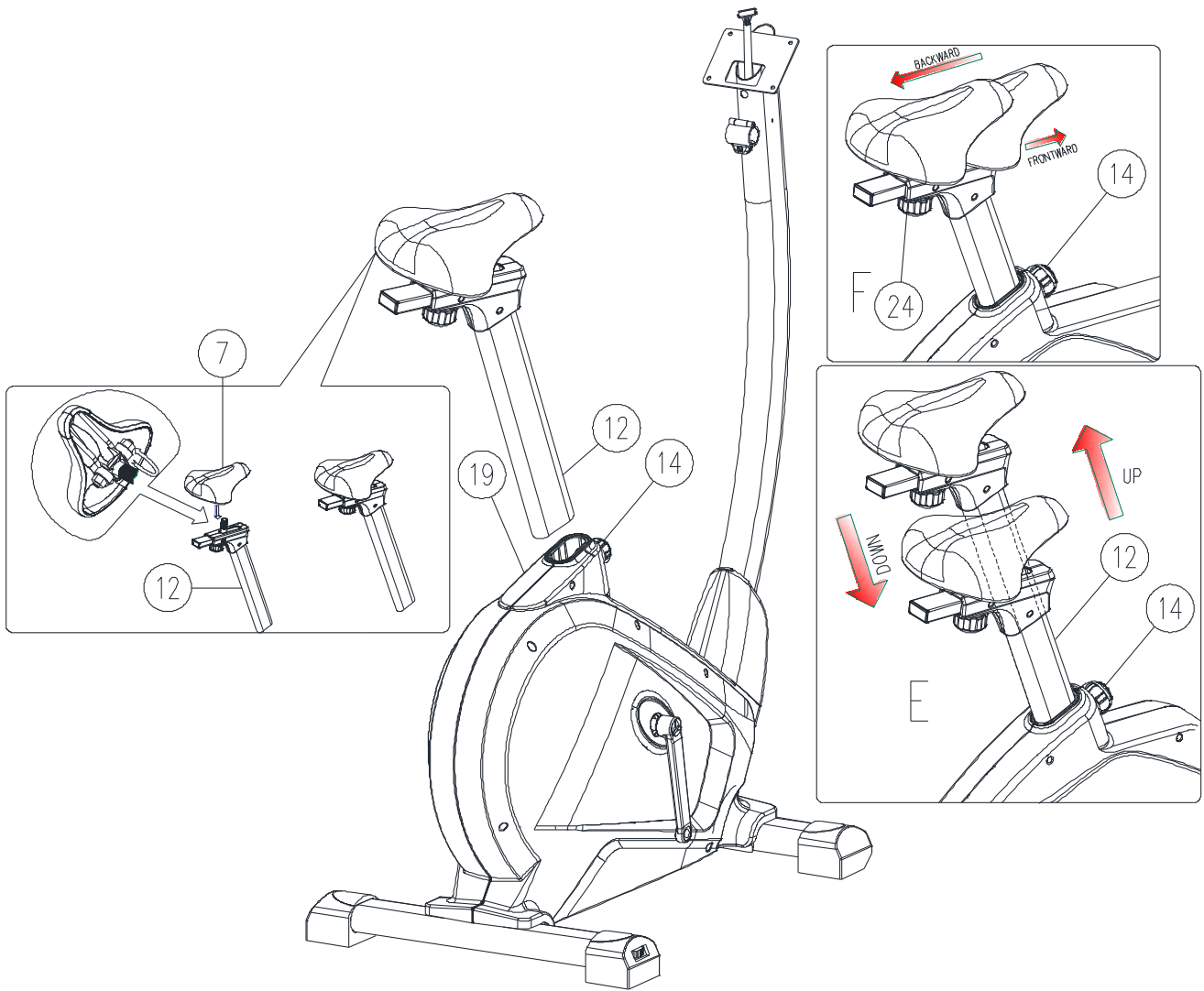


Pull out the Upper protective cover (57) from the Main frame (19) and attach it to the Handlebar post (63) shown as right image

Connect the Upper Computer Cable (2) with Lower Computer Cable (16) shown as the left top image.

Attach the Handlebar Post (63) onto the Main Frame (19) with M8 Allen Bolts (61), Spring Washers (51), Flat washer (48) or Curved Washers (62). Tighten fully. Then slide down the Upper protective cover (57).

STEP 3

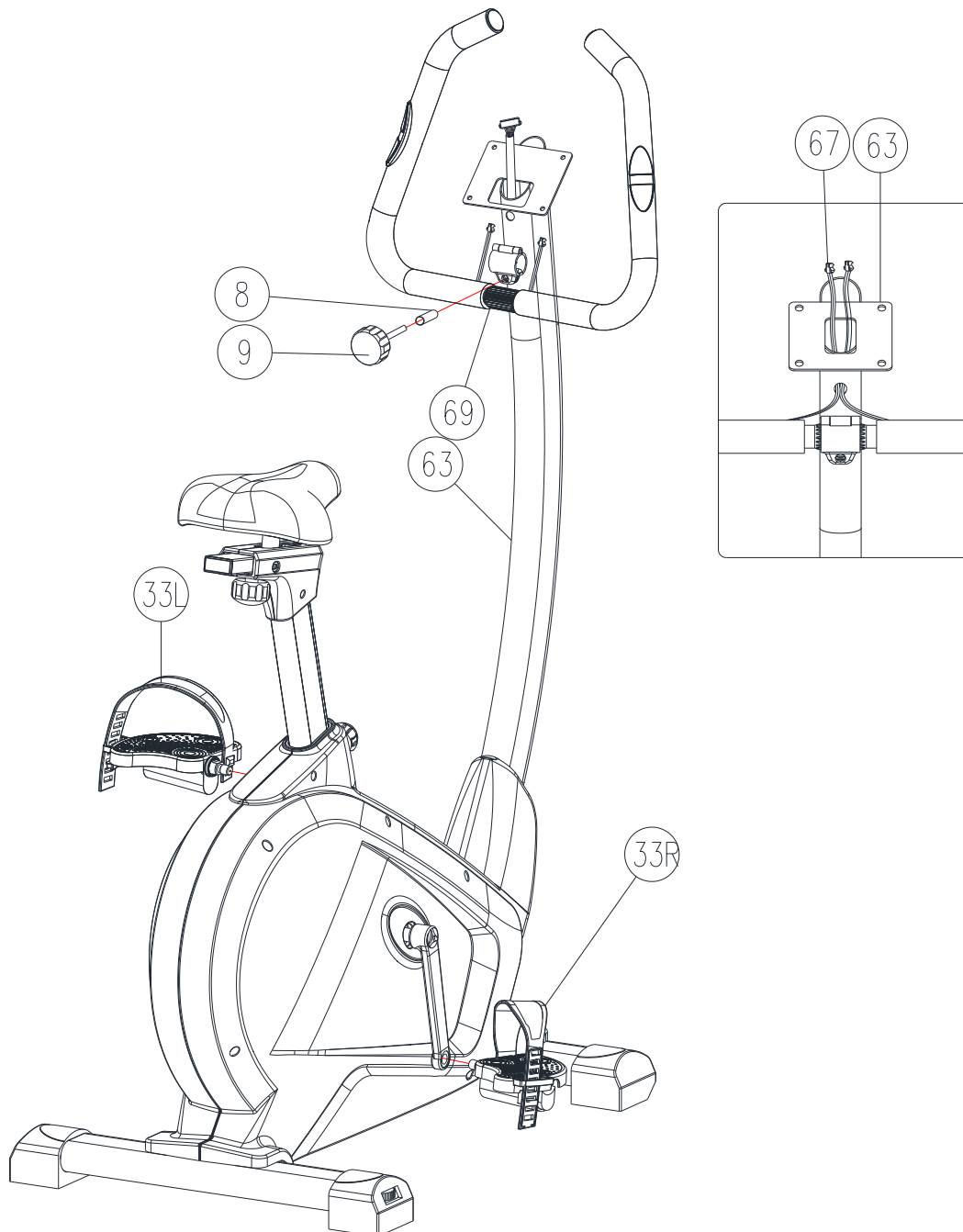


Assemble the saddle (7) to the adjustable Seat post (12) by the nut shown as the left image.

Place the Seat Post (12) into the Main Frame (19), set it at the desired position and lock it by inserting Round head grooved pin (14) in place and tighten fully.

The setting of the seat post can be adjusted up and down easily as desired later through turning and pulling the Round head grooved pin (14). The user could adjust the saddle backward and frontward as well by adjusting the knob (24). See the right images.

STEP 4

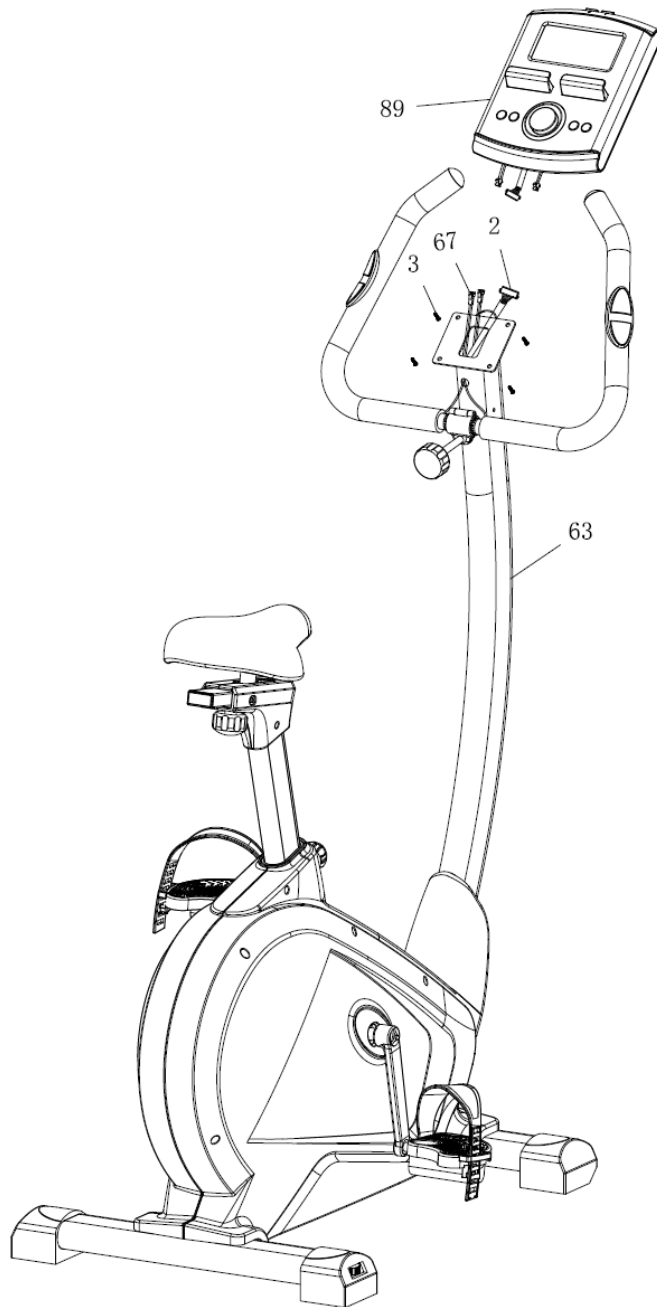


Assemble the pedals Left and Right (33L) & (33R) to the crank Left and Right (30L) & (30R).

Attach the Handlebar (69) onto the Handlebar Post (63) with Tube Spacer (8) and Round-shaped Knob (9). Tighten fully.

Remember to pull the Hand pulse cable (67) through the hole above Handlebar holder plate (63) and extent to the upright position, see the right image.

STEP 5



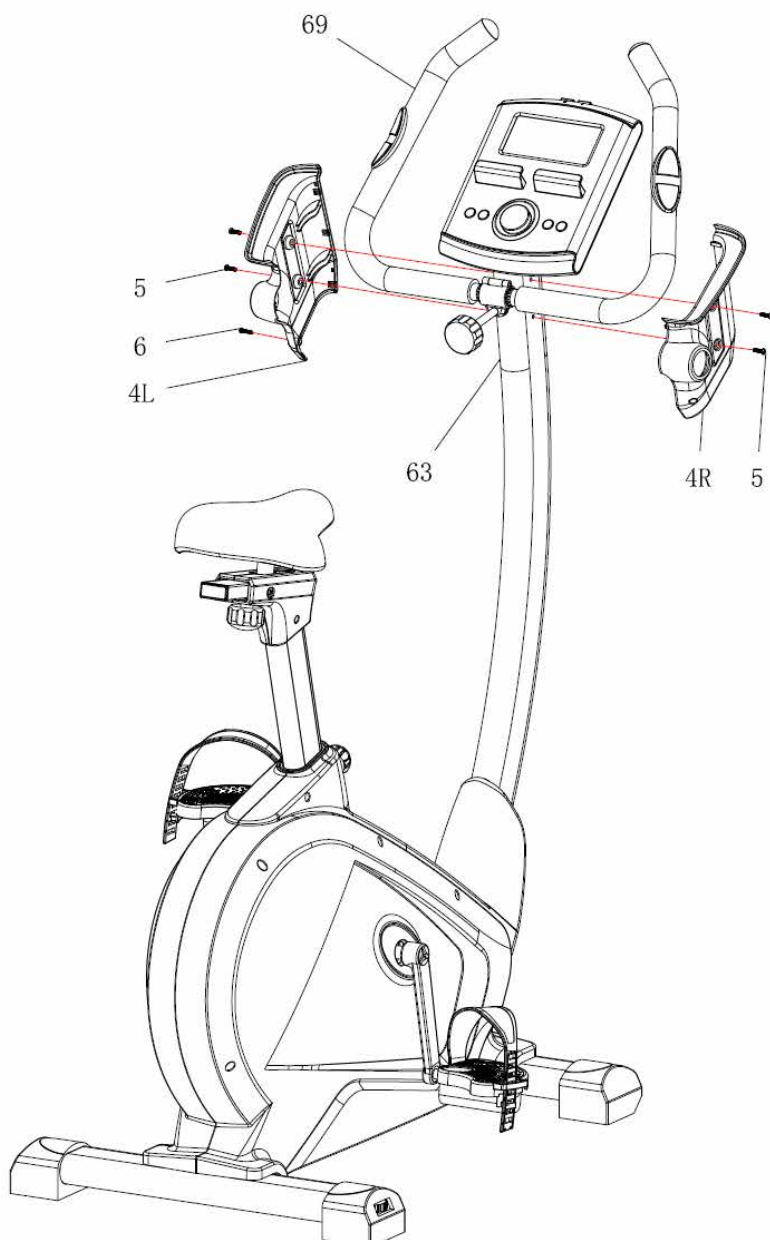
Remove the screws (3) from the back of the computer (89).

Connect the Upper Computer Cable (2) with the Computer (89).

Connect the Hand pulse cables (67) with the Computer (89).

Attach the Computer (89) onto the computer bracket with 4 M5 screws (3).

STEP 6



Attach the left and right Computer Plastic Cover (4L+4R) onto the Handlebar with and M4 Screws (6) and M5 Screws (5).

Now your machine is ready for use.

COMPUTER INSTRUCTION MANUAL

DISPLAY FUNCTIONS

ITEM	DESCRIPTION+
TIME	Count up - No preset target, Time will count up from 00:00 to maximum 99:59 with each increment is 1 minute. Count down - If training with preset Time, Time will count down from preset to 00:00. Each preset increment or decrement is 1 minute between 00:00 to 99:00.
SPEED	Displays current training speed. Maximum speed is 99.9 KM/H or ML/H.
RPM	Displays the Rotation Per Minute. Display range 0~15~999
DISTANCE	Accumulates total distance from 0.00 up to 99.99 KM or ML. The user may preset target distance data by using UP/DOWN button. Each preset increment or decrement is 0.1KM or ML between 0.00 to 99.90.
CALORIES	Accumulates calories consumption during training from 0 to maximum 9999 calories. (This data is a rough guide for comparison of different exercise sessions which can not be used in medical treatment.)
PULSE	User may set up target pulse from 0 - 30 to 230; and computer buzzer will beep when actual heart rate is over the target value during workout.
WATTS	Display current workout watts. Display range 0~999.
MANUAL	Manual mode workout.
BEGINNER	4 PROGRAM selection.
ADVANCE	4 PROGRAM selection.
SPORTY	4 PROGRAM selection.
CARDIO	Target HR training mode.
WATT PROGRAM	WATT constant training mode.

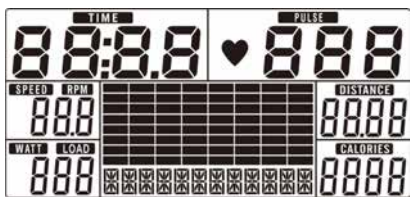
KEY FUNCTION

ITEM	DESCRIPTION
Up (Encoder)	Increase resistance level Setting selection.
Down (Encoder)	Decrease resistance level Setting selection.
Mode / Enter	Confirm setting or selection.
Reset	Press and hold for 2 seconds, computer will reboot and start from user setting. Reverse to main menu during preset workout value or stop mode.
Start/ Stop	Start or Stop workout.
Recovery	Test heart rate recovery status.
Body fat	In stop mode, press it for body fat measurement

OPERATION:

POWER ON

Plug in power supply, computer will power on and display all segments on LCD for 2 seconds (Drawing 1).



Drawing 1

WORKOUT SELECTION

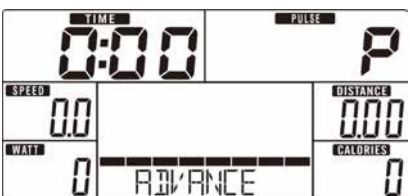
Use UP or DOWN (Encoder) to select workout Manual (Drawing 2) → Beginner (Drawing 3) → Advance (Drawing 4) → Sporty (Drawing 5) → Cardio (Drawing 6) → Watt (Drawing 7).



Drawing 2



Drawing 3



Drawing 4



Drawing 5



Drawing 6

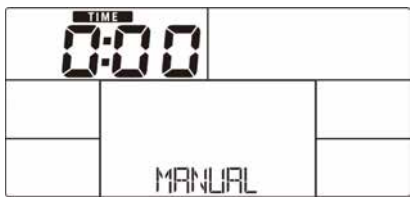


Drawing 7

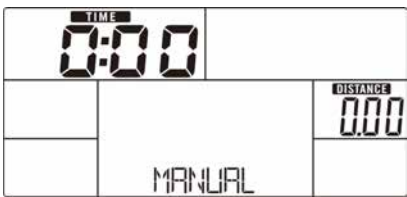
Manual Mode

Press START in main menu may start workout in manual mode.

1. Use UP or DOWN (Encoder) to select workout program, choose Manual and press MODE / ENTER to get into.
2. Use UP or DOWN (Encoder) to set TIME (Drawing 8), DISTANCE (Drawing 9), CALORIES (Drawing 10), PULSE (Drawing 11) and press MODE / ENTER to confirm.
3. Press START/STOP keys to start workout. Use UP or DOWN (Encoder) to adjust load level. Load level display in WATT window, no adjusting for 3s, it will switch to display WATT (Drawing 12).
4. Press START/STOP keys to pause workout. Press RESET to reverse to main menu.



Drawing 8



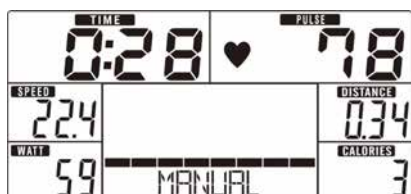
Drawing 9



Drawing 10



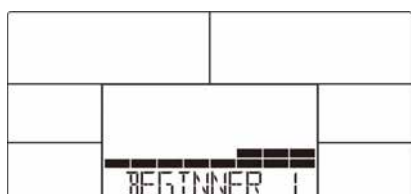
Drawing 11



Drawing 12

Beginner Mode

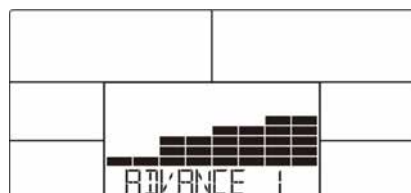
1. Use UP or DOWN (Encoder) to select workout program, choose Beginner mode and press MODE / ENTER to get into.
2. Use UP or DOWN (Encoder) to select Beginner program 1~4 (Drawing 13) and press MODE / ENTER to get into.
3. Use UP or DOWN (Encoder) to set TIME.
4. Press START/STOP key to start workout. Use UP or DOWN (Encoder) to adjust load level.
5. Press START/STOP key to pause workout. Use RESET to reverse to main menu.



Drawing 13

Advance Mode

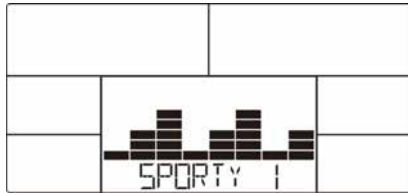
1. Use UP or DOWN (Encoder) to select workout program, choose Advance mode and press MODE / ENTER to get into.
2. Use UP or DOWN (Encoder) to select Advance program 1~4 (Drawing 14) and press MODE / ENTER to get into.
3. Use UP or DOWN (Encoder) to set TIME.
4. Press START/STOP key to start workout. Use UP or DOWN (Encoder) to adjust load level.
5. Press START/STOP key to pause workout. Use RESET to reverse to main menu.



Drawing 14

Sporty Mode

1. Use UP or DOWN (Encoder) to select workout program, choose Sporty mode and press MODE / ENTER to get into.
2. Use UP or DOWN (Encoder) to select Sporty program 1~4 (Drawing 15) and press MODE / ENTER to get into.
3. Use UP or DOWN (Encoder) to set TIME.
4. Press START/STOP key to start workout. Use UP or DOWN (Encoder) to adjust load level.
5. Press START/STOP key to pause workout. Use RESET to reverse to main menu.



Drawing 15

Cardio Mode

1. Use UP or DOWN (Encoder) to select workout program, choose H.R.C. and press MODE / ENTER to get into.
2. Use UP or DOWN (Encoder) to set Age (Drawing 16).
3. Use UP or DOWN (Encoder) to select 55%.75%.90% or TAG (TARGET H.R.) (default: 100).
4. Use UP or DOWN (Encoder) to set workout TIME.
5. Press START/STOP key to start or stop workout. Use RESET to reverse to main menu.



Drawing 16



Drawing 17

Watt Mode

1. Use UP or DOWN (Encoder) to select workout program, choose WATT and press MODE / ENTER to get into.
2. Use UP or DOWN (Encoder) to set WATT target. (default: 120, Drawing 18)
3. Use UP or DOWN (Encoder) to set TIME.
4. Press START/STOP key to start workout. Use UP or DOWN (Encoder) to adjust Watt level.
5. Press START/STOP key to pause workout. Use RESET to reverse to main menu.



Drawing 18

RECOVERY

After exercising for a period, keep holding on hand grips or wearing chest strap and press RECOVERY key. All function display will stop except "TIME" starts counting down from 00:60 to 00:00 (Drawing 19). Screen will display your heart rate recovery status with the F1, F2.... to F6. F1 is the best, F6 is the worst (Drawing 20). User may keep exercising to improve the heart rate recovery status. (Press the RECOVERY button again to return the main display.)



Drawing 19



Drawing 20

BODY FAT

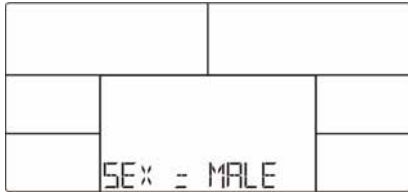
1. In STOP mode, press the BODY FAT key to start body fat measurement.
2. Console will remind to input user GENDER (Drawing 21), AGE, HEIGHT, WEIGHT, then begin to measure.

3. During measuring, users have to hold both hands on the hand grips. And the LCD will display “= ” “= = ” (Drawing 22)for 8 seconds until computer finish measuring.
4. LCD will display BODY FAT advice symbol, BODY FAT percentage (Drawing 23), BMI (Drawing 24) for 30 seconds.
5. Error message:

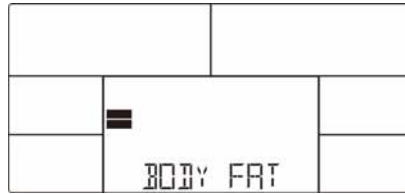
*The LCD displays “= = ” “ = ” (Drawing 25)–means not hand the grip or wear chest strap correctly.

*E-1–There is no heart rate signal input detected.

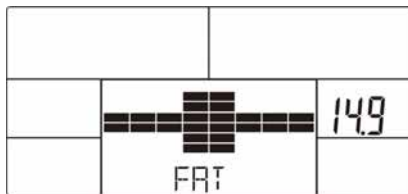
*E-4–Occurs when FAT% is below 5 or exceeds 50 and BMI result is below 5 or exceeds 50 (Drawing 26).



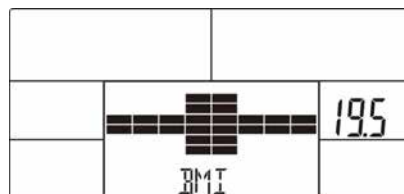
Drawing 21



Drawing 22



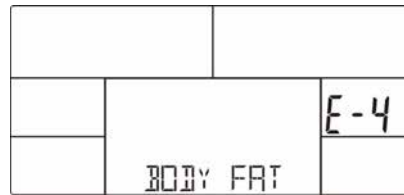
Drawing 23



Drawing 24



Drawing 25



Drawing 26

APP

iConsole+ Training



1. This console can connect APP on the smart device by Bluetooth.

2. Once console is connect to smart device via Bluetooth , the console will don't display.

Noted:

1. After 4 minutes without pedaling or pulse input, console will enter into power saving mode. Press any key may wake the console up.
2. When computer act abnormal, please plug out the adaptor and plug in again.



GARLANDO SPA
Via Regione Piemonte, 32 - Zona Industriale D1
15068 - Pozzolo Formigaro (AL) - Italy
www.toorx.it - info@toorx.it